

## 6. Technical Parameters

IR distance	120m(7 inch ptz) / 60m (mini ptz)
IR angle	angle adjustable with the zoom
Pan speed	0.6°-200°/s(high speed) / 6°-30°/s (middle speed)
Tilt speed	0.6°-75°/s(high speed) / 4°-17°/s (middle speed)
Tile range	0°-90°, auto flip 180°
Proportional zoom	support,can change the speed according to the zoom
Preset	220 (high speed) 128 (middle speed)
Patrol	8, each group can include 32 preset (high speed) 4, each group can include 16 preset (middle speed)
Track scan	4, each group can record 100 actions (high speed) 1, each group can record 100 actions (middle speed)
Scan between two preset	support
Park	support,can select preset, patrol, pattern scan, scan between 2 preset, pan auto move (high speed) support,can select preset, patrol (middle speed)
Max image size	1.3MP(1280x960) / 2.0MP(1920x1080)
Video compression	H.264/MJPEG
Frame rate	50Hz: 25fps(1980×720), 60Hz:25fps(1280×960)-1.3MP PTZ 50Hz: 25fps(1920×1080), 60Hz:25fps(1920×1080)-2.0MP PTZ
Network protocol	IPv4/IPv6, HTTP, HTTPS, 802. 1x, Qos, FTP, SMTP, UPnP, SNMP, DNS, DDNS, NTP, RTSP, RTP, TCP/IP , DHCP, PPPoE
User rights	authorized user name and password and MAC address binding: HTTPS encryption: 802.1x IEEE network access control
View the video at the same time	Max support 6 network user view the same channel video
Double stream	Support
Network interface	Built-in RJ45 network interface, support 10M/100M network data
PTZ control protocol	Network
Power supply	DC12V/4A (7" PTZ) / DC12V/2A (MINI PTZ) AC24V/4A (7" PTZ) / AC24V/2A (MINI PTZ)
Power consumption	Max 10W in the day-time: Max 30W(7"PTZ) / 20W(mini PTZ) at night
Temperature and humidity	-20℃--+60℃, ≤90%RH frostless
Web browser	Support IE,IE8,IE9, Chrome8+,Firefox 3.5+,Safari 5+
Security mode	Up to 32 users, divided into 3 levels: administrators, operators and viewer
Protection grade	TVS3000V lightning protection, anti surge, anti surge: outdoor PTZ: IP66

# IP HD DOME CAMERA QUICK OPERATION GUIDE

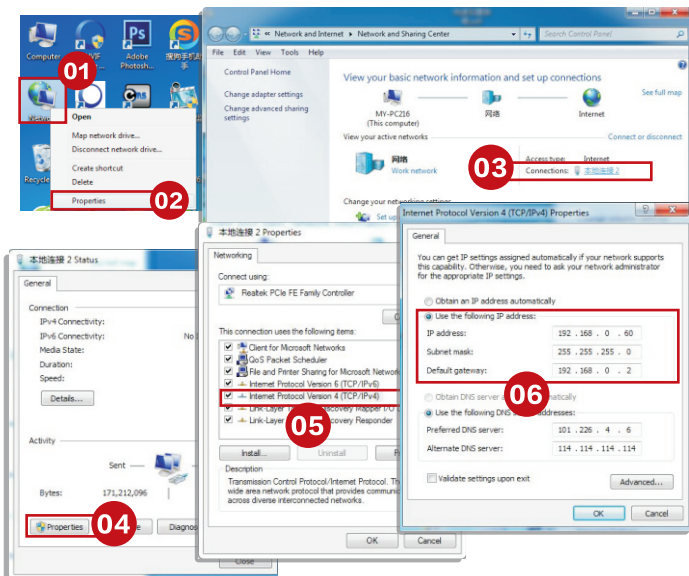
## 1. How to modify the IP address of PTZ

Current there is two method on modifying PTZ IP address: one via website; another one via search tools.

### 1.1 Modify the PTZ IP address via IE website

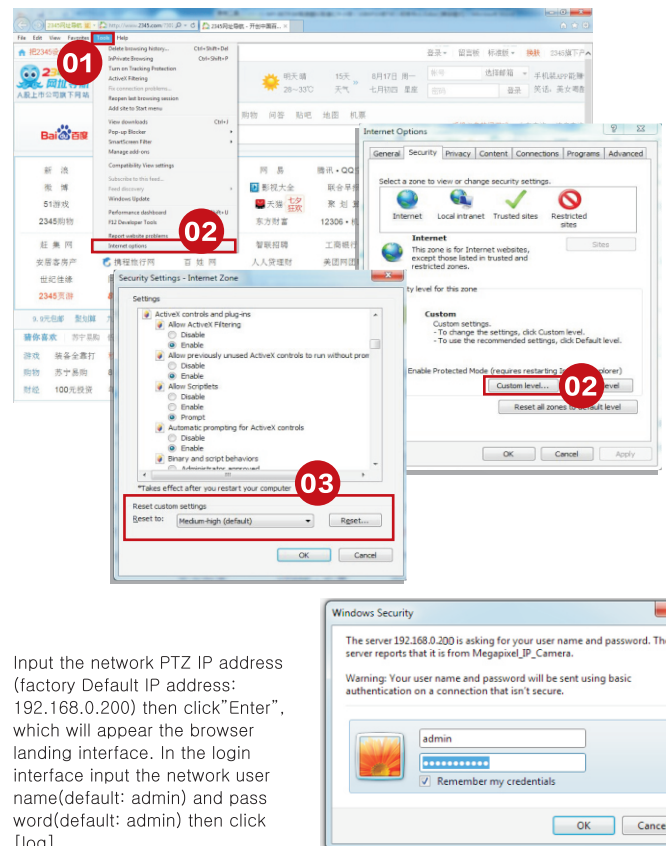
#### 1.1.1 set the computer network for connection testing

The PTZ camera default IP address is 192.168.0.200 ,so need to set the computer IP address in the same segment. Put the mouse on the computer desktop "network" icon, press the right mouse button to click on the "properties" then you can open "the network and sharing center", then click "local connection", click "properties" in the pop-up dialog box (general),and then double-click the "Inter protocol version 4 (tcp/IPv4)" in the pop-up dialog box (Network). Last select "use the following IP address" to configure a 0 segment of the IP.



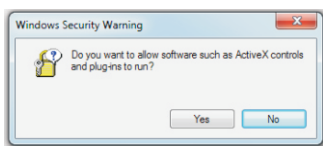
#### 1.1.2 IE login

Open the IE browser, in the 工具 / security / custom level (C)... make the "ActiveX control and interpolation" all select "enable" or "tip", also make the security level to low.



Input the network PTZ IP address (factory Default IP address: 192.168.0.200) then click "Enter", which will appear the browser landing interface. In the login interface input the network user name(default: admin) and pass word(default: admin) then click [log].

After the first time to enter the login interface, it will appear "Click here to download the plugin, please close the browser when installation" tip as the follow diagram, click to install the plugin. Last click to download the controls : install and run this controls once it was downloaded.

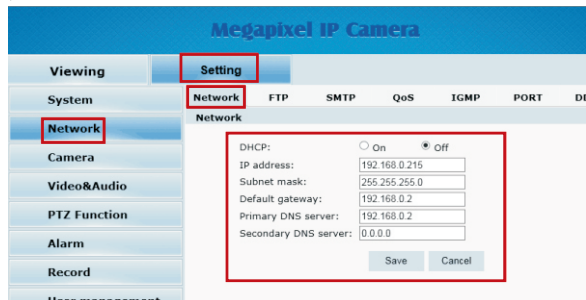


You can view the real time video by refreshing the website after the installation finished.



### 1.1.3 modified IP

Then enter the settings – network –network, you can modify the PTZ IP address as below picture:

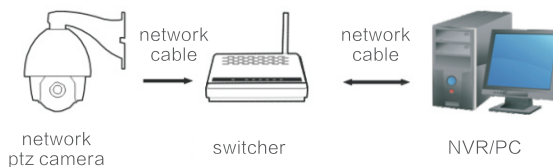


Mark: you also can use ONVIF test tools(ONVIF Device Manager" to search the PTZ IP address.

## 2. Operation method

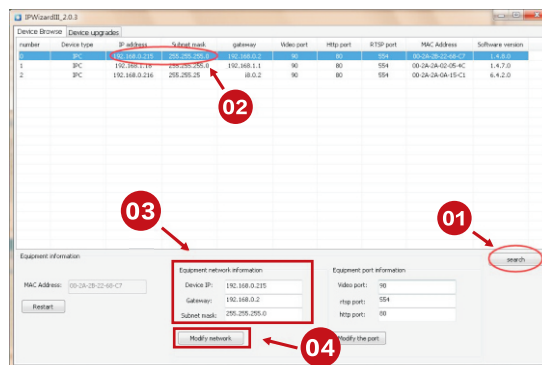
### 2.1 Network PTZ camera connection

Network PTZ camera default IP address: 192.168.0.200, user name: admin, pass word:admin;Normally working voltage under DC12V/4A ± 10%, the connection in LAN as below:



### 2.2 Search and add IP address

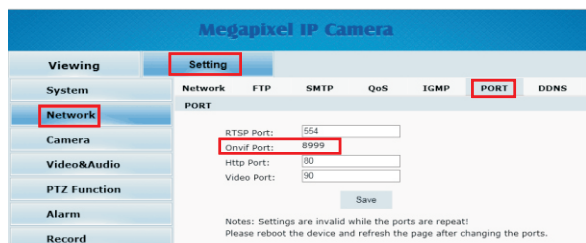
Network ptz camera fast access can use the search function in the support software. Using search function automatically search the IP address of the network ptz camera in the same LAN. Open the search tools, click search. Search out the IP, and then point to modify the IP, and then modify the network information inside the device, for example as following chart:



Mark: you also can use ONVIF test tools(ONVIF Device Manager" to search the PTZ IP address.

## 3. Take NVR which support ONVIF to add devices

Take NVR which support ONVIF to add ptz, the main attention is the ONVIF port, user name and password these three items are to be kept consistent. PTZ ONVIF port can be seen on the IE Figure:



Mark: the IP address of the NVR and the PTZ camera should be in the same LAN.

## 4. Set the ptz camera preset

Take IE interface for example: after you enter into the zoom camera page in the IE interface,click"PTZ control" on the left then will appear the direction key of controlling ptz. Figure:Operate the ptz run to the location where you want to set preset, then click the ptz function on the left, select the preset value you want to set, then click set to finish. Figure:



## 5. Set PTZ Patrol

[e.x.]: Add 1-4 preset in the number one patrol, stay 30s, speed 40, operate as below steps:

### Add preset in the patrol

- (1) set preset 92, call preset 1, start to set number 1 patrol
- (2) Call preset 1, add preset 1 to the number 1 patrol
- (3) Call preset 2, add preset 2 to the number 1 patrol
- (4) Call preset 3, add preset 3 to the number 1 patrol
- (5) Call preset 4, add preset 4 to the number 1 patrol
- (6) Set preset 92, call preset 9, save number 1 patrol

### Set the preset stay time in the patrol

- (1) set preset 92, call preset 10, start to set the preset stay time
- (2) Call preset 30, set the preset stay time 30s.

### Set the preset running speed in the patrol

- (1) set preset 92, call preset 11, start to set the preset running speed
- (2) Call preset 40, set the preset running speed 40

Note: All the network ptz camera support to call the number 35 preset and execute the patrol of 1-8 preset after March, 2015. E.x we only set 1.2.3 this three presets, call preset 35, then the ptz camera will be cruising among these three presets. (Call preset 35 execute the patrol function correspond the first patrol, default stay time 10m, speed 50. If you want to change the stay time or patrol speed, please follow the above steps, thank you).

PTZ CD Data(HS) download link address:

<http://pan.baidu.com/s/1nt7r1CP>