

INTERIOR SMART LOCK WITH PASSCODE

Model #: DSS-DLM5



Features

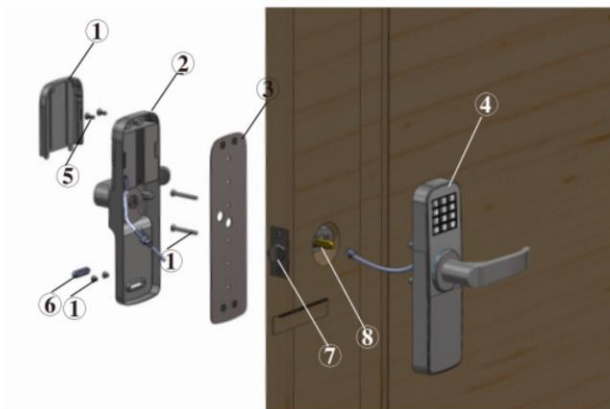
- Interior Door Lock
 - Support Passcode & Key Backup
 - Working Voltage: 6V DC, 4 AA Batteries
 - Alloy Material
 - Store up to 50 User Passcode, 4-12 Digit Code Combination
 - Anti-peep touchscreen
 - Alarm when battery low
 - LED Backlight Keypad
 - Support door thickness 1.5 to 1.9 inc
-
- 4-ch Audio Recording

Technical Specifications

Model No.	DSS-DLM5
Condition	Indoor use only
Unlocking	Passcode & Key Backup
Unlock Time	Less then 1.5 sec
Power Supply	6V DC, 4 AA Batteries
Static Current	30 uA
Voltage	200mA

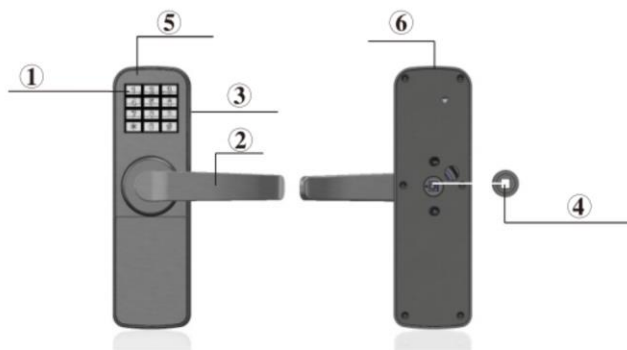
Lock parts

- ① Screw
- ② Back panel
- ③ Cover of the back panel
- ④ Front panel
- ⑤ battery cover
- ⑥ Silicagel plug screw
- ⑦ Latch
- ⑧ Square cotter



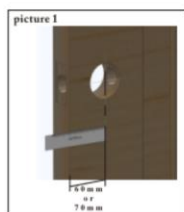
- ① Keypad
- ② handle
- ③ USB interface
- ④ Rotating wheel
- ⑤ front panel
- ⑥ Front panel

Note: There is a red dot on the rotating wheel, please make sure the red dot be rotated towards the handle when installing, otherwise the lock cannot work.

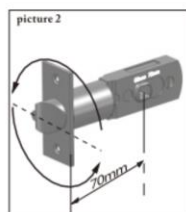


Installation

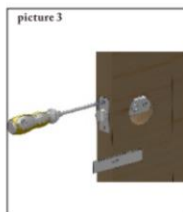
1. Install the latch and lock catch according to the following pictures



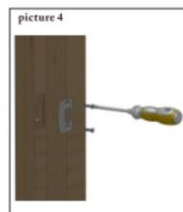
Dig the holes



Adjust the latch position



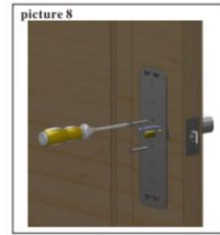
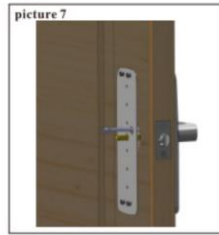
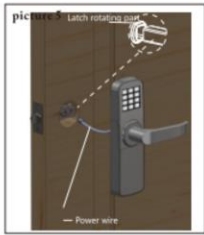
Install the latch



Install the lock catch

2. Install the front panel

- ① make the power wire of the front panel be through the door hole according to the picture 5.
- ② fix the front panel onto the door by inserting square cotter into the rotating wheel hole of the front panel and the latch hole according to the picture 6.



3. Install the cover of back panel

- ① make the power wire of the front panel be through the cover of back panel according to the picture 7.
- ② Fix the front panel and the cover of the back panel by two screws according to the picture 8, make sure the front panel and the cover of the back panel are both vertical.
- ③ Turn the handle to check if it is installed well.

4. Install the back panel

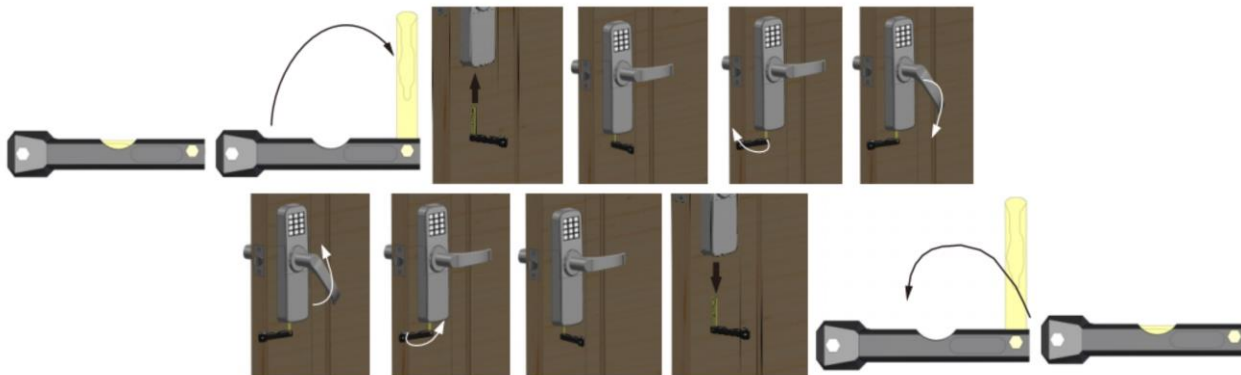
- ① connect the power wire of the front panel and the power wire of the back panel according to the following picture



- ② put the power wire into the hole of the back panel according to the following picture.
- ③ Fix the back panel onto the door by inserting square cotter into the rotating wheel hole of the back panel
- ④ Fix the back panel onto the door by 4 pcs screws.

Unlock by key

Insert the key into the key hole, and turn 90°, then turn the handle to unlock the lock, at last turn the key to the original direction to get out the key. for more information, please check the following pictures.



We reserve the right to modify product design and specification without notice and without incurring any obligation

For more information please contact a DSS Sales Representative

Toll Free: 1.888.467.8812 · Fax: 1.609.431.0932 · Email: sales@dss-cctv.com

www.dss-cctv.com