

QUICK OPERATION GUIDE

— HIGH SPEED DOME CAMERA —

Contents

Special Declaration	01
Tips	01
1. Packing List	03
2. Camera Specifications	03
3. Installation Method	04
4. Link device	06
5. Software tools	07
6. Web client access	08
7. Set the ptz camera preset	10
8. PC client access	11
9. Mobile APP access	13
10. NVR add camera	15
11. PTZ Camera Common Function Settings	15
12. DIP switch	19
13. Q&A	20
Appendix	24

Special Declaration

Before connecting and using this product, please read these instructions carefully and keep it for references in the future.

This manual might be not accurate technically or contains some minor type errors. The contents in this manual about production description and program might be updated without notice. Updated contents will be added in the new version. We will change or upgrade the products or program any time.

Tips

1. Camera Default Information:

User name: admin Password: admin IP address: 192.168.0.200

2. Camera Related Software & Tool Name

IP search tool: **IPWizardIII**

Client Management Software: **HCMS**

Mobile App: **Hisee**

3. Precautions Before Camera Network Connection

Please make sure that your ip device and this ip ptz dome camera in the same network segment before connection. E.x: our camera default ip:

192.168.0.200, which was in "0" network segment; If your ip devices ip address like 192.168.0.300 then it also in "0" network segment, then you can access to the camera via IE browser or HCMS directly. If your ip devies ip address like 192.168.3.200 then it was not in "0" network segment, at this time please use that IP Tools [**IPWizardIII**] to change the camera IP address to the same network segment as your ip devices.

4. Camera Connection

Please make sure what kind of IP devices you will take to connect this ptz dome camera as it is a professional security product. Currently you can access the camera via NVR, HCMS, Web Interface & Mobile App.

Mark: If you want to record a very long time then we highly recommended you to take NVR for viewing and recording via Onvif protocol. Onvif port number 8899 will be required to input when connection. As this camera built in Hikvision private protocol, so it can be automatically recognized to enjoy one key connection when you use HIKVISION brand NVR series.

5. View Camera On Web Interface

If you want to access the camera via browser, we strongly recommended you to take IE browser. With IE, you will be required to download plug-in. If you can not download plug-in or there is no image after you have downloaded the plug-in, please set the IE browser security level to the lowest.

6. View Camera on PC

If you want to access the camera on your PC, please scan the QR code on the camera box to download the software [HCMS] and refer to the camera user manual on operation. It is more stable and more powerful function for you viewing camera than viewing by IE browser

7. Installation Environment

Avoid to installing the product in a shock environment, Keep the product away from electromagnetic interference. Do not use products in extremely hot, cold, dusty, corrosive or high humidity environments. Speed dome camera working temperature : -20°C æ +50°C æ humidity less than 90%..

8. Other Precautions

The dome camera is the smallest ptz camera in the world currently. Please keep the transparent dome clean when testing and installation. Please do not tear off the protection film before you install the camera. And do not touch the transparent dome when installation. If there is fingerprints or dirty thing on the transparent dome cover, it will reflect the IR light to the camera lens, which can lead the whole image white. As a result, it can affect the picture quality. If you make the transparent dome dirty by mistake, please use the cloth in package to clean it.

1 Packing List

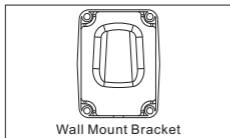
No.	Part Name	Quantity
1	Camera	1 set
2	Screw	1 bag
3	Bracket	1 pcs

2 Camera Specifications

Video Quality	2.0MP (1920X1080)	4.0MP (2560X1440)	5.0MP (3072 x 1728)
Lens	f= 3.5mm~10.5mm, 3X Optical Motorized Zoom f= 2.8mm~12mm, 4X Optical Motorized Zoom f= 2.7mm~13.5mm, 5X Optical Motorized Zoom f= 4.7mm~94mm, 20X Optical Motorized Zoom f= 4.5mm~148.5mm, 33X Optical Motorized Zoom		
Pan range	0°~360°		
Tilt range	0°~90°		
High Speed	Pan 0.6 ~ 200 /s Tilt: 0.8 ~ 75 /s Preset: 220		
Middle Speed	Pan 6 ~ 30 /s Tilt: 5 ~ 17 /s Preset: 128		
Park function	Support preset		
SD card	Support SD card slot,NOT with built-in SD card		

Microphone	No
Operating Power	PoE or DC 12V 2A
Day/night mode	Auto ICR color to black.
Day/night mode	4 inch dome camare:up to 60m 5 inch dome camare:up to 120m
Frame Rate	Up to 30fps
POE Standard	802.3at, 44V~54V. Support up to 330ft via CAT6 cable
Network Connection	P2P and QR Code
PC OS	Windows, Mac OS
Mobile OS	iOS, Android
Browser	Supports IE Edge, Safari
Network protocol	onvif 2.4, hikvision
Protection Grade	IP66(outdoor speed dome camera)
Rated voltage	DC12V 2A \pm 10%
Power Consumption	Max 20W
10/100M auto adaptive;support RTSP/FTP/PPPPOE/DHCP/DDNS/NTP/UPnP and so on etwork protocol,support WEB,support OSD,support real time video transmission,support motion detection, support JPEG capture picture; support unified client remote control monitoring software, easy connect brand NVR in the market.	

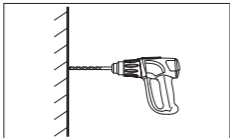
3 Installation Method



Step-1:

Draw positioning holes

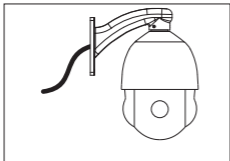
Take out bracket from package box, place the wall mount bracket on the wall and mark down all 4 fixing holes

**Step-2:**

Drill holes and put expansion screws in. Drill 4pcs expansion screw's installation holes at pre-marked position, then put 4pcs expansion screws in.

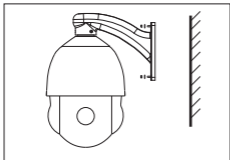
Note:

Please bring expansion screws own.

**Step-3:**

Wall mount connect speed dome and bracket.

Put the connection port of the speed dome into bracket hole and put the screw lock into corresponding threaded holes.

**Step-4:**

Fix the speed dome camera.

Lead cable drawn out from the holder recess, then put the 4 installation hole of bracket of speed dome focus on the wall's 4pcs expansion screw and tighten that 4pcs nut. Then seal the appeared groove via glass glue.

Step-6: Cable connecting

Please refer to the Section VI of this chapter- Connecting Method.

Step-7: Tear off protection film

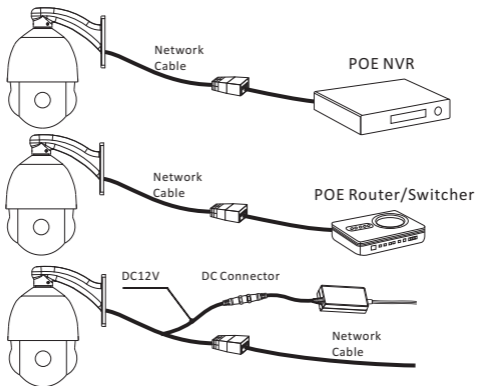
Tear off protection film of transparent cover.

Note: please take care of transparent cover.

4 Link device

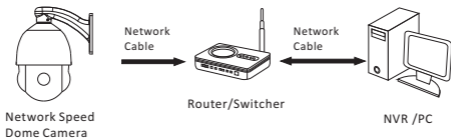
4.1 Connection way as following: Please connect the POE dome camera and POE switcher/router/NVR with ethernet cable. If the switcher/router/NVR is without POE function, please power on the dome camera and connect it to switcher/router/NVR with the ethernet.

Details as below:

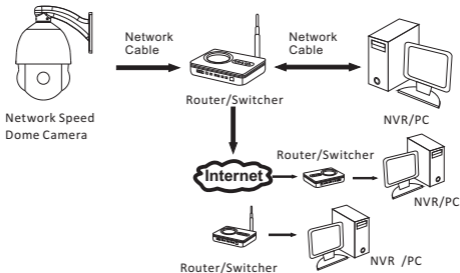


4.2 Typical application connection diagram

LAN Connection



WAN Connection



5 Software tools

Scan the QR code of manual to download the user manual. Or go the the web:
[http://121.42.188.188:83/v2/Manual\(LF\).pdf](http://121.42.188.188:83/v2/Manual(LF).pdf)
to download the document



Manual



Client Setup

Scan the QR code on the screw bag or left QR code to download software and installation tool.
Or go the the web:<http://121.42.188.188:83/HS-LF.zip>
to download the software and installation tool.



HCMS_2.2.9.2.exe

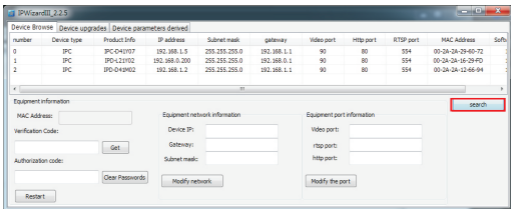


IPWizardIII_2.1.1

After downloading there will be a search tool IPWizardIII, a PC client (HCMS) installation package and a camera manual compression package. There are four ways to access the dome camera: web client access, PC client access, mobile APP access, and NVR access.

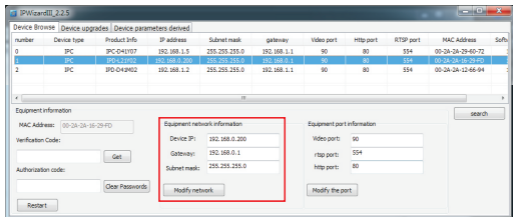


First to confirm the IP address of the device, you can use a dedicated search tool (IPWizardIII) to search it. Factory default IP is 192.168.0.200

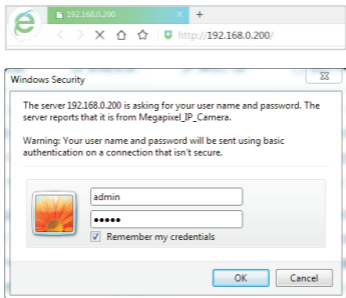


6 Web client access

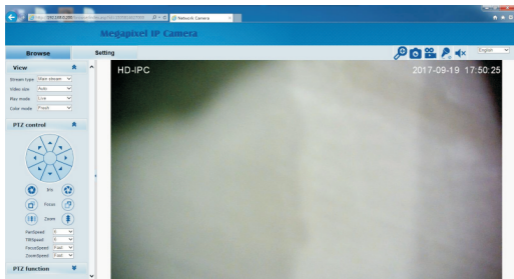
6.1 The default IP of camera is 192.168.0.200, user name:admin, password: admin. when the web client-side access the ip Camera need to set the ip address to a same network segment, or use search tool to change the ip address of the device to same network segment on the laptop, can use the red column below to change the IP address of the camera. For example, if your computer ip address is 192.168.1.20, then you need to change the camera ip address to 192.168.1.xx (xx rang from 0 to 225). Please note that we don't change the default ip address of camera as the computer is in same LAN (192.168.0.xx)



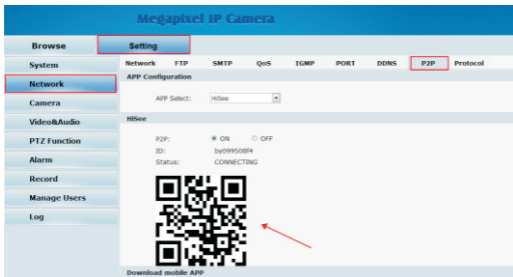
6.2 Open the IE browser, enter the IP address(factory default IP:192.168.0.200) of the camera then click Enter. The browser login screen appears, enter the "user name" (default admin) "password" (default admin) then click login.



6.3 Open the IE browser, enter the IP address (factory default IP:192.168.0.200) of the camera then click Enter. The browser login screen appears, enter the "user name" (default admin)"password" (default admin) then click login.



6.4 View the ID of the mobile APP, Enter the set—Network—P2P



7 Set the ptz camera preset

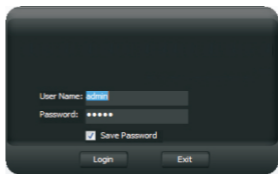
Take IE interface for example: after you enter into the zoom camera page in the IE interface, click "PTZ control" on the left then will appear the direction key of controlling ptz, Figure: Operate the ptz run to the location where you want to set preset, then click the ptz function on the left, select the preset value you want to set, then click set to finish. Figure:



8 PC client access

8.1 Scan code to download the PC client(HCMS),install the file to your computer.

8.2 Open and log in the HCMS client software,
Default account: admin password: admin



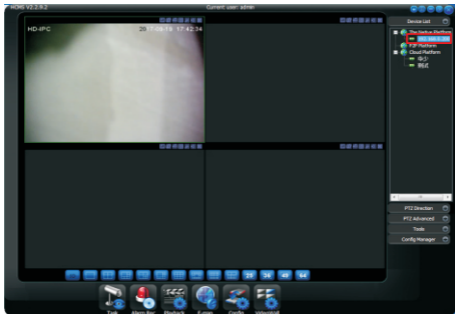
8.3 After enter the software, click Configuration Management - Device Management



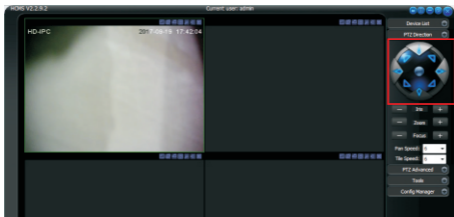
8.4 In the device management page, click [device look-up] , the network setup of the local Area Network will appear below the [device IP] , then choose the address of the device IP, the IP address will save in the [device saved] function, at same time, the device IP address will appear in the left top of [device list] under [local platform] , then clicking the X in the right top of the page for exit.



8.5 In the main interface, click [Device List] - [Local Platform] – double click the IP address to request screen.



8.6 In the main interface of the client, open the [PTZ direction control] to control the camera on the next, left, right, zoom +, zoom -, focus +, focus - and so on.



9 Mobile APP access

9.1 Installation and acquisition

Android system / IOS system

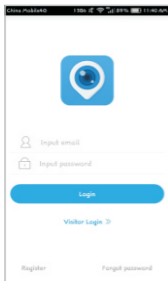
Search for keywords "Hisee" on Google Play / App Store to download and install. You can also download by the QR code



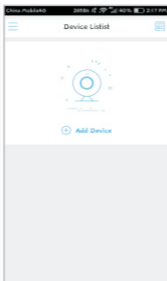
Android



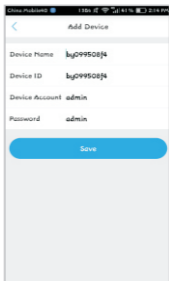
IOS



(Picture 1)



(Picture 2)



(Picture 3)

9.2 Register an APP account after installation well, enter the account and password to log in. (Picture 1)

9.3 Click the + sign on the middle, enter to the [add device interface]. And choose Wireless device. (Picture 2)

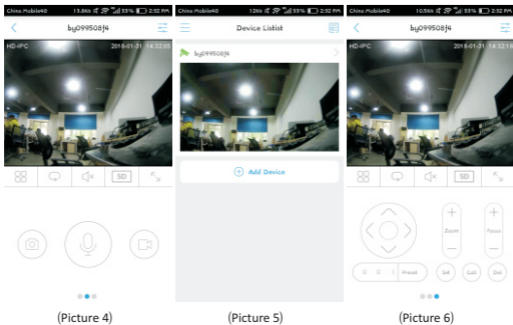
9.4 By scanning the QR code or inserting the ID manually in the page of device adding-in, inserting the ID number of the device, When default as scanning the code, please aim at the QR code (QR code is located in the device web customer ID 【setup】 — 【internet】 — 【P2P】),



after inserting the device's ID, setup a name then click Add. (Picture 3).

9.5 After adding successfully, can see your online state on the software interface. Gray for offline, green for online. (Picture 4)

9.6 Click the phone screen and select the online device request screen. Drag the screen then can control the direction of the camera. (when first time using the mobile phone APP will appear operating tips). (Picture 5 and picture 6)



10 NVR add camera

- 10.1 Make sure the NVR and the camera are within the same network segment.
- 10.2 Open the channel management on NVR, and, click [search device] or [custom add] button in the channel management
- 10.3 Select the IP address of the camera, click **【Add】** or manually enter the IP address of the dome camera to add.
- 10.4 Select the onvif protocol, onvif port is 8999 (onvif port 8999 is fixed values can not be changed), And then enter the correct account and password of the camera, click Save.

11 PTZ Camera Common Function Settings:

11.1 Turn On/Off IR Lights Manually

Turn On IR Lights- call preset 90 and then call preset 2

Turn Off IR Lights-call preset 90 and then call preset 3

IR Lights Auto Mode- call preset 90 and then call preset 1

11.2 IR Lights Sensitivity Settings

High IR Lights Sensitivity- call preset 90 and then call preset 11

Medium IR Lights Sensitivity- call preset 90 and then call preset 12

Low IR Lights Sensitivity- call preset 90 and then call preset 13

11.3 IR CUT Setting

Turn on IR CUT- call preset 91 and then call preset 1

Turn off IR CUT-call preset 91 and then call preset 2

Turn on IR CUT Automatically- call preset 91 and then call preset 3

Turn off IR CUT Automatically -call preset 91 and then call preset 4

11.4 Patrol setting and call

[e.x]:Add 1-4 preset in the number one patrol, stay 30s, speed 40, operate as below steps

Add preset in the patrol

(1) Set preset 92, call preset 1, star to set number 1 patrol

(2) Call preset 1, add preset 1, star to set number 1 patrol

(3) Call preset 2, add preset 2, star to set number 1 patrol

(4) Call preset 3, add preset 3, star to set number 1 patrol

(5) Call preset 4, add preset 4, star to set number 1 patrol

(6) Set preset 92, call preset 9, save number 1 patrol

Set the preset stay time in the patrol

(1) Set preset 92, call preset 10, star to set the preset stay time

(2) Call preset 30, set the preset stay time 30s.

Set the preset in the patrol running speed

(1) Set preset 92, call preset 11, star to set the preset running speed

(2) Call preset 40, set the preset running speed 40.

Set AB line scan in arc- call preset 94, call preset 46

Set AB line scan out arc- call preset 94, call preset 47

11.7 Park Settings

(1)Park Preset Settings

For example, if you want to set preset 1 as a park preset, then please call preset 94 and then preset 1; If you want to set the park time as 10s, then call preset 94 and then call preset 31

(2)Park Patrol Setting

For example, if you want to set patrol 1 as a park patrol,then please call preset 94 and then preset 9; If you want to set the park time as 10s, then call preset 94 and then preset 31

(3)Park Pattern Setting

For example, if you want to set pattern 1 as a park pattern,then please call preset 94 and then call preset 17; If you want to set the park time as 10s, then call preset 94 and then call preset 31

(4)Park AB Line Scan Setting

For example, if you want to set park AB line scan, call preset 94 and then call preset 22; If you want to set the park time as 10s, call preset 94 and then call preset 31

11.8 Turn on/off auto tracking(only support the camera which built in auto tracking function)

Turn on auto tracking function, call preset 94,and then call preset 50

Turn off auto tracking function,call preset 94,and then call preset 51

Note: All the network ptz camera support to call the number 35 preset and execute the patrol of 1-8 preset apart March, 2015.E.x we only set 1.2.3 this three presets, call preset 35, then the ptz camera will cruise among these presets. (Call preset 35 execute the patrol function correspond the first patrol,default stay time 10m, speed 50. If you want to change the stay time or patrol speed, please follow the above steps).

turn on patrol

Call preset 92, then call preset 1 (turn on patrol 1)

Call preset 92, then call preset 2 (turn on patrol 2)

Call preset 92, then call preset 3(turn on patrol 3).....and so on

11.5 Pattern setting and call

For example:If customer want to set pattern 1,then the steps as below:

Set preset 93,and then call preset 1(start to setting pattern 1)

Operate the ptz camera working according to the customers requirement

Set preset 93 and then call preset 5(save pattern 1)

Turn on pattern scan function operations:

call preset 93, and then call preset 1(turn on pattern 1)

call preset 93, and then call preset 2(turn on pattern 2)

call preset 93, and then call preset 3(turn on pattern 3)

call preset 93, and then call preset 4(turn on pattern 4)

11.6 AB line scan and call

Set line scan to A , call preset 94, call preset 41

Set line scan to B , call preset 94, call preset 42

Set AB line scan under high speed- call preset 94, call preset 43

Set AB line scan under medium speed- call preset 94, call preset 44

Set AB line scan under low speed-call preset 94, call preset 45

11.9 Reset the camera

Call preset 96 and then call preset 10 and then call preset 12
and then call preset 14

12 DIP switch

12.1 Baud Rate Setup

Baud rate and corresponding DIP status as bellow:

Baud Rate 2400bps 4800bps 9600bps Automatic identify



Rs485 control bus need all device which connect to it shall be in parallel mode, and each end of the system shall be connected to a 120Ω resistor. Our speed dome has a 120Ω resistor in it, you need only set it up through dip switch SW2, put the 4th switch on, then the resistor is connected, details as below:



12.2 ID Setup

ID setup (address code setup obey binary rules)

address code shall be set through 8 DIP switch (SW1).

Keyboard control speed dome through communication



bus, one keyboard can control max. 255pcs speed dome camera, each speed dome camera has its own address code, user can set address code through 8 DIP switch, details as bellow:

Address	SW1 Switch Setup							
	SW1-1	SW1-2	SW1-3	SW1-4	SW1-5	SW1-6	SW1-7	SW1-8
1	ON	OFF	OFF	OFF	OFF	OFF	OFF	OFF
2	OFF	ON	OFF	OFF	OFF	OFF	OFF	OFF
3	ON	ON	OFF	OFF	OFF	OFF	OFF	OFF

4	OFF	OFF	ON	OFF	OFF	OFF	OFF	OFF
5	ON	OFF	ON	OFF	OFF	OFF	OFF	OFF
6	OFF	ON	ON	OFF	OFF	OFF	OFF	OFF
7	ON	ON	ON	OFF	OFF	OFF	OFF	OFF
8	OFF	OFF	OFF	ON	OFF	OFF	OFF	OFF
9	ON	OFF	OFF	ON	OFF	OFF	OFF	OFF
10	OFF	ON	OFF	ON	OFF	OFF	OFF	OFF
11	ON	ON	OFF	ON	OFF	OFF	OFF	OFF
12	OFF	OFF	ON	ON	OFF	OFF	OFF	OFF
---	---	---	---	---	---	---	---	---
254	OFF	ON	ON	ON	ON	ON	ON	ON
255	ON	ON	ON	ON	ON	ON	ON	ON

13 Q&A

Q : The camera can do self-test, but can not control after powered on.

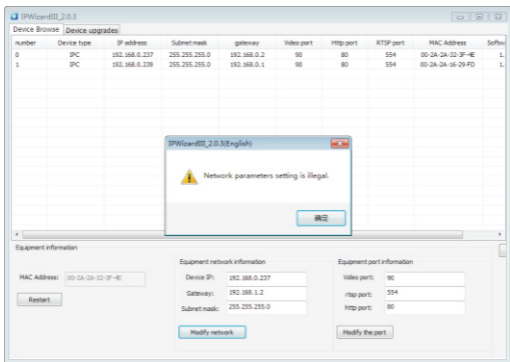
A : On the web client find setting—PTZ function—PTZ protocol—protocol (pelco-D) —Baud rate (2400) —Address(1), Change the protocol baud rate address to the default parameter.

The screenshot shows the web interface for a Megapixel IP Camera. The 'Setting' menu is active, and the 'PTZ Function' sub-menu is selected. The 'PTZ protocol' tab is chosen, displaying a live video feed of a street scene. Below the video feed, the following settings are visible:

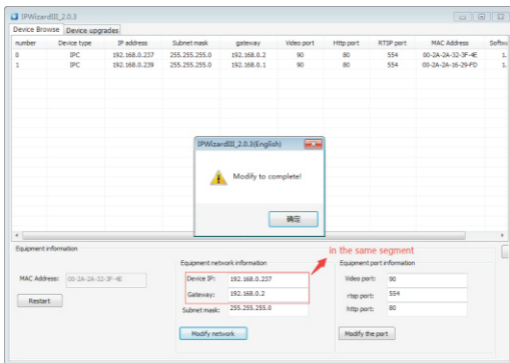
- Address: 1
- Protocol: Pelco-D
- Baud rate: 2400
- 3D Protocol: Pelco-HK
- User mode: Common

Additional controls include a circular PTZ control pad, buttons for Iris, Focus, and Zoom, and dropdown menus for Pan speed (6) and Tilt speed (6). A red arrow points to the 'User mode' dropdown menu.

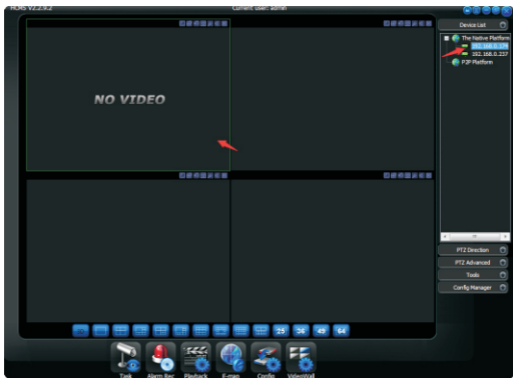
Q : When using search tool to modify the ip, it show " Network parameters setting is illegal "



A : The new IP and gateway should be in the same segment.



Q : The IP address is not found after powered on.And then PC client show”no VIDEO” or WEB client show ”connection error”.



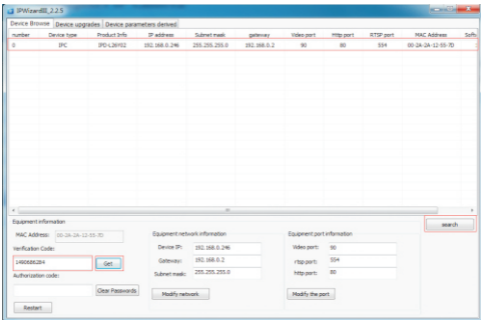
A : The ip of camera may not be correct or the camera ip and the computer ip may not be in the same segment.You can use the tool IPWizardIII to search the real camera ip and set the ip address to a same network segment.

Q : Mobile shows the device offline.

A : Make sure the device is connected to the router,DNS server address and gateway are correct.If not confirmed, turn on DHCP to get the correct DNS server and gateway automatically

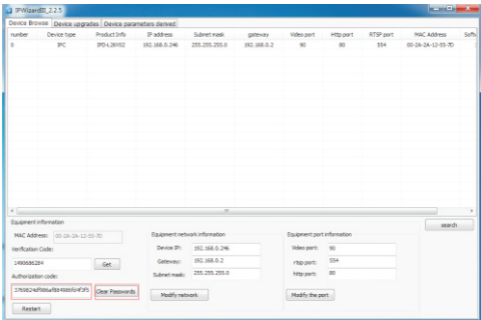
Q : Operation of How to Reset Password

A : Click "search", choose the IP cameras, and get the verification code.



Get the verification code and send the verification code to me
 I will send the authorization code to you
 Put the authorization code into relative column, clear "Clear Passwords"

It shows "password empty success".



Appendix

Simple Troubleshooting

Failure Mode	Parts For Checking	Possible Cause	Solution
No actions and no images after power on	External electricity	Power supply is abnormal	Replace
		Main board exists problems	Replace
There is image, but camera can't self test after power on	Motor is abnormal	Mechanical fault	Whether something get stuck
	The swing of camera	Very oblique	Adjust
		Power is not enough	Use the right power supply
		Main board exists problems	Replace
Camera can self test after power on, but no image	No connect cable between power board and connecting plate	Disconnected	Connect again
		Disconnected	Connect well
	Network cable	Cable is too long	The normal length is 100m
		IP addresses conflict	Change IP address
		Line-sequential of network cable is wrong	Equivalent devices use crossover cable; Incoordinate devices use parallel cable
There is image, camera can self test after power on, but can't control	Client, Web configuration	The settings of PTZ address, protocols, and baud rate	PTZ address, protocols, and baud rate must correspond with the information of camera dial code
Image is faint		Camera is in the status of manual focus	Set the zoom module to auto focus
	Transparent protective cover	It is dirty	Clean the cover

Clean The Transparent Cover

The transparent cover must be cleaned regularly to make imaging clear. Please be careful when you clean it. Don't touch the transparent cover directly; the acidic perspiration stains may corrode the surface coating of this transparent cover. Hard objects may scratch the transparent cover, which will lead to faint imaging.

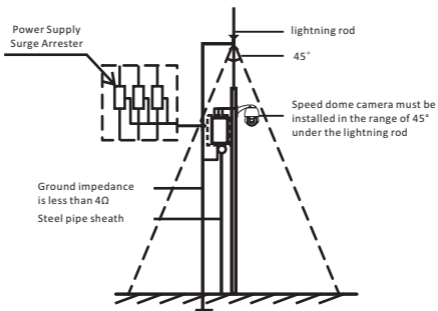
Please use soft dry cloth or other substitutes to clean it.

If dirty is serious, you can use neutral cleanser. It also can be cleaned by any senior furniture cleaning products.

Lighting Protection, Surge Protection

Outdoor speed dome camera must consider thunder-proof and surge immunity. On the premise of guaranteeing electrical safety, we can take following lightning protection measures:

- At least keep 50m distance between signal transmission line and high voltage equipment or high voltage cable.
- Outdoor wiring under the eaves.
- For open field, adopt seal steel pipe buried wiring way, and adopt one-point earthing with the steel pipe. Do not adopt aerial wiring.
- It need to add extra high-frequency thunder-proof device and lightning rod in strong thunderstorms area or high inductive voltage region (such as high voltage substation).
- Thunder-proof and grounding design of Exterior installation and circuit must be in accordance with building lightning proof requirements; It must meet national standard and industry standard.
- System must be equipotential grounding. Grounding device must meet anti-jamming and electric safety dual requirements. The connection with strong electrified wire netting can't be short connection or mixed connection. When system is in the condition of single-phase grounding, ground impedance is less than 4Ω , ground wire cross-section area must be more than 25 mm^2



Pressing Line Method And Line-sequential Of Network Cable

There are two kinds of network cable: crossover cable and parallel cable.

Crossover cable: one end uses the standard of 568A, the other end uses the standard of 568B.

Parallel cable: Both the two ends use 568A or 568B (568B is mostly adopted).

The standard of 568A: green-and-white, green, orange-and-white, blue, blue-and-white, orange, brown-and-white, brown.

The standard of 568B: orange-and-white, orange, green-and-white, blue, blue-and-white, green, brown-and-white, brown.

If the two equipments are incoordinate, use parallel cable to connect.
For example, connect PC to the router or switch.

If the two equipments are equivalent, use crossover cable to connect.
For example, connect PC to PC.

