

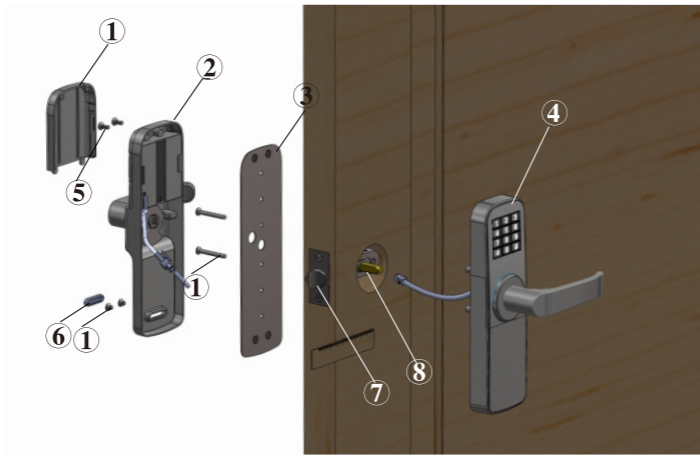
The manual of electronic keypad lock

Contents

Lock parts.....	page 1
Installation.....	page 1&2
Replace the battery.....	page 2
Unlock by key.....	page 2
Technical parameter.....	page 3
Function setup.....	page 3&4
Unlocking ways.....	page 4
Trouble shooting.....	page 4

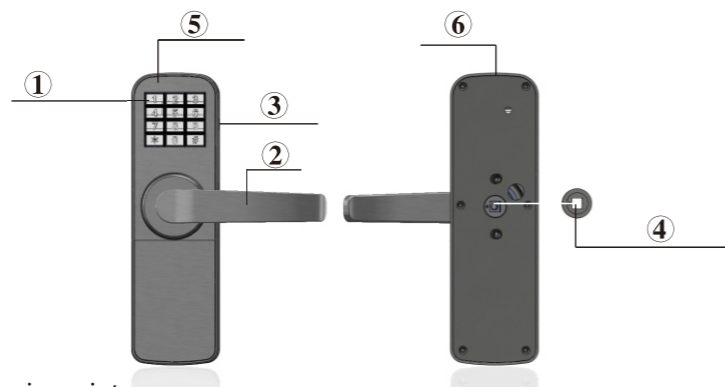
Lock parts

- ① Screw
- ② Back panel
- ③ Cover of the back panel
- ④ Front panel
- ⑤ battery cover
- ⑥ Silicagel plug screw
- ⑦ Latch
- ⑧ Square cotter



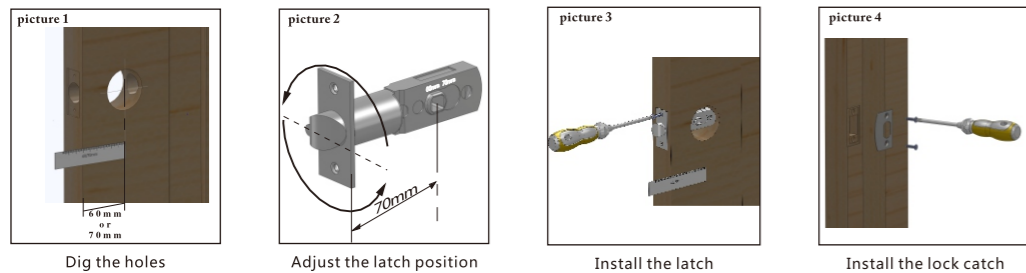
- ① Keypad
- ② handle
- ③ USB interface
- ④ Rotating wheel
- ⑤ front panel
- ⑥ Front panel

Note: There is a red dot on the rotating wheel, please make sure the red dot be rotated towards the handle when installing, otherwise the lock cannot work.



Installation

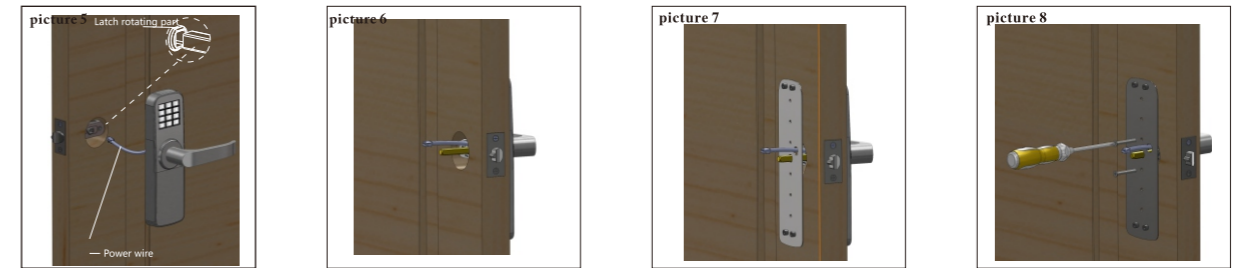
1. Install the latch and lock catch according to the following pictures



2. Install the front panel

- ① make the power wire of the front panel be through the door hole according to the picture 5.
- ② fix the front panel onto the door by inserting square cotter into the rotating wheel hole of the front panel and the latch hole according to the picture 6.

①

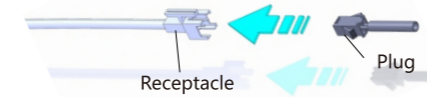


3. Install the cover of back panel

- ① make the power wire of the front panel be through the cover of back panel according to the picture 7.
- ② Fix the front panel and the cover of the back panel by two screws according to the picture 8, make sure the front panel and the cover of the back panel are both vertical.
- ③ Turn the handle to check if it is installed well.

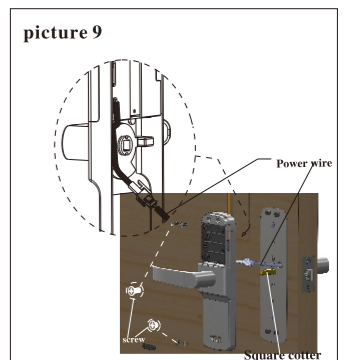
4. Install the back panel

- ① connect the power wire of the front panel and the power wire of the back panel according to the following picture



- ② put the power wire into the hole of the back panel according to the following picture.

- ③ Fix the back panel onto the door by inserting square cotter into the rotating wheel hole of the back panel
- ④ Fix the back panel onto the door by 4 pcs screws.



Replace the battery

Push up and get out the battery cover, then get out the original battery and put 4 pcs five alkaline battery into the battery case, when putting into the battery, please pay attention to the positive pole and negative pole. See the following pictures for more information.



Unlock by key

Insert the key into the key hole, and turn 90°, then turn the handle to unlock the lock, at last turn the key to the original direction to get out the key. for more information, please check the following pictures.



②

Technical parameter

Working voltage: DC6V

Working current: ≤200mA

Static power consumption : ≤20uA

Code capacity: 50 groups

Code extent:4~12 digits

Unlocking time delay: 3 seconds

Battery:4 pcs 5 alkaline battery

When the battery voltage is less than 4.6V, after unlocking, it will alarm for 9 times continuously.

Battery usage : can open 10000 times, about one year

Function setup

1. Enter the programming mode

The original programming code is "6668888", press [*] [6668888] [#] to enter the programming code, the red light will be on

all the time after

entering the programming code. The programming code is with super code function, namely you can input any digits before

or after the right

programming code to open the lock.

Note: after entering the programming mode, it will exit from this mode automatically if there is no operation within 8 seconds,

2.Set up the user code.

Press [*] [programming code] [#] to entering the programming state, the red light is on all the time. then press [1], and the red light blinks rapidly, twice every seconds, input the first [4~12-digit user code], and press [#] to confirm, then input the first [4~12-digit user code] for the second times, press [#] to confirm; If hearing a long buzzer, it means the first user code is set up successfully; If hearing three short beeps in one second, it means the first user code is not set up successfully.

then input the second [4~12-digit user code], press [#] to confirm, then input the second [4~12-digit user code] for the second times, press [#] to confirm; If hearing a long beep, it means the second user code is set up successfully; If hearing three short buzzer in one second, it means the second user code is not set up successfully.....we can set up the other user codes according to this way: input the new [4~12-digit user code] [#] for twice. It can set up 50 pcs user codes in total.

Note: each user has its own number .the number of programming code is 0,and the number of user code is from 1 - 50 .no need to input the number when setting, the system will calculate from 1 automatically .

3.Delete the user code

Press [*] [programming code] [#] to entering the programming state, the red light is on all the time, during this time, press [2], the red light blink quickly. Input the first [user code or the number of user code (1,3,4 ...50) you want to delete] [#], if heard a long beep, it means the first user code is delete successfully; If heard short beeps for three times, it means the user code is not delete successfully .

Then input the second [user code or the number of the user code (1,3,4 ...50) you want to delete] [#], if heard a long beep, it means the first user code is delete successfully; If heard short beeps for three times, it means the user code is not delete successfully we can delete the other user codes according to this way: input the [user code or the number of the user code (1,3,4 ...50) you want to delete] [#] .

4. Delete all user codes

Press [*] [programming code] [#], then press [3], then press [333], a long beep for three times means all user codes are deleted.

5.Set up /exit from the combination mode

①set up the combination mode . press [*] [programming code] [#] to entering the programming state, the red light is on all the time, then press [4] [2], a long beep means it is set up successfully. Now we need to input two user codes to open the lock.

②Exit from the combination mode . press [*] [programming code] [#] to entering the programming state, the red light is on all the time, then press [4] [1], a long beep means the system have already been exited from the combination mode. Now we can input one user code to open the lock.

③

6. Silent mode

①Set up the silent mode

Press [*] [programming code] [#] to entering the programming mode,press [5], then press [2], a long beep means entering the silent mode, in this mode, there is no sound when you press the keypad, you can only know the state by the light change .

②Exit from the silent mode

Press [*] [programming code] [#] to entering the programming mode,press [5], then press [1], a long beep means exiting from the silent mode. In this mode, there is sound when pressing the keypad .

7. Modify the code: user code and programming code

Press [*] [#], then input the [original code], then press [#] to confirm, hearing a long beep and the red light will blink two times in every second, input the [new code], press [#] to confirm, then press this [new code] again, press [#] to confirm, if we hear a long beep, it means the code is modified successfully, the original code can not open the lock now; If we hear three short beeps, it means the code is changed unsuccessfully, the original code still can open the lock. Note: here the code includes both the user code and the programming code. When getting this lock, the user need to change the programming code, which is very important, should be remembered any time.

8. Normally open function

Input a code and [#] to open the lock, before the motor do not reset, keep pressing [#] until hear two long beeps, which

means the normally open function is set successfully, now just turn the handle directly to open the lock, no need to input the code. If you open the lock with a code for one time under this normally open function mode, it will exit from the normally open function mode,

Come back to the normal mode: need to input a code and [#] to open the lock.

9. Restore factory setting

If forgetting the programming code, you can do according to the following steps to restore factory setting:

Insert the insulation rod (such as toothpick) onto the reset key which is into the reset key hole of the front panel, and then press the reset key for one second, you will hear a long beep, then all settings and data are deleted, the initial programming code backs to "6668888" .

Unlocking ways

1. From outside

① unlock by password: input [the valid code] [#], hear a long beep, then turn the handle to open the lock.

Now the super code function is also available, it means you can input any digits before or after the right code to open the lock. For example, if the code is [6668888], you can input [12366688885678] [#] to unlock the lock.

② unlock by key: under emergency circumstances, you can use the key to open the lock. See unlocking steps by key on page 2 for more information.

③Unlock by emergency power supply: when the lock battery is used up and the key is not around, you can charge to open the lock by connecting the USB interface and the mobile power pack / the android mobile phone charger.

④ Unlock by the combination codes. When it is under the combination mode, we need to open the lock by code according to the following steps:

input the first [valid user code] [#], then input the second [valid user code] [#] within 8 seconds, if hearing a long beep, we can turn the handle to open the lock now.

2. From inside

① Turn the handle to open the lock.

Trouble shooting

Problem	Cause	Solution at lock
no response when pressing the keypad	No electricity	Connect the connector of the front panel and the back panel well again, and connect the power wire of the back panel well again.
Alarm for a long time after opening	AA batteries need to be replaced	Replace the AA batteries, see on page 2 for more information.
after finishing the installation, input the programming code, can not open the lock	the programming code is wrong.	Try again. Make sure you have input the right programming code" 6668888", then press #, turn the handle to open the lock.
	rotating wheel is not installed well	Make sure the red dot of the rotating wheel be rotated towards the handle direction.

④