



HD NETWORK CAMERA

User Manual

Contents

Introduction	3
1. Overview	4
1.1 Range of Application.....	4
1.2 Product Description.....	5
1.3 Operation Environment	5
2. Device Connection	6
3. Device Operation Instructions	7
3.1 Check Connection.....	7
3.2 Searching Device	8
3.3 Installation of Controls and Login to System	11
3.3.1 Preview.....	11
3.3.2 Playback (optional function)	13
4 Parameter Setting.....	14
4.1 Display Configuration	14
4.2 Image Control	15
4.3 Video Blocking	16
4.4 ROI (if applicable)	17
5.Record Parameters	18
5.1Rec Parameters.....	18
5.2Schedule.....	18
6. Network Parameters	19
6.1 Network Parameters.....	19
6.2 Bit stream setting.....	20
6.3 E-Mail Configuration	21
6.4 DDNS Configuration	22
6.5 IP Filtering	23
6.6 RTSP.....	23
6.7 FTP.....	24
7. Alarm Parameter	25
7.1 Mobile Detection.....	25

7.2 I/O Alarm (if applicable).....	26
7.3 Lens Blocking.....	26
8. Device	27
8.1 SD Card (optional function)	27
8.2 Audio	28
8.3 Logs.....	28
9. System Parameters.....	29
9.1 Basic Information.....	29
10. Advanced.....	32
10.1 System Update.....	32
10.2 Default Parameters.....	32
10.3 System Maintenance	33
11. Intelligent	33
11.1 Smart Schedule.....	33
11.2 Smart Analysis.....	34
11.3 Perimeter Intrusion Detection (PID)	34
11.4 Line Crossing Detection (LCD)	35
11.5 Stationary Object Detection.....	36
11.6 Pedestrian Detection(PD).....	37
11.7 Face Detection (FD)	38
11.8 Cross Counting(FD).....	39

Introduction

Thank you for using our network camera products. Our network camera products are integrated and developed for network video monitoring, including Storage Network Bullet, Wireless Storage Network Bullet, IR Network Dome, IR Network Weather-Proof Cameras and High-Speed Network Ball. High-performance single SOC chips are used in media processor for audio/video acquisition, compression and transmission/transfer. Standard H.264 encoding algorithm is applied to ensure clear and smooth video representation and transfer performance. Embedded Web Server offers users access to real-time surveillance and remote control of front-end camera through IE browser.

The network cameras are easy to install and operate. The network cameras are applicable to large and medium-size enterprises, governmental projects, large mall, chain supermarkets, intelligent buildings, hotels, Hospitals and schools and other group customers, as well as to applications requiring remote network video transmission and monitoring.

Instructions:

- For purpose of this manual, IP camera means network camera.
- Single click means a single click on the left mouse button.
- Double click means a double-click on the left mouse button.
- The default factory IP address for IP camera is 192.168.1.168.
- The default factory administrator user name for IP camera is admin (in lowercase), and the password is admin (in lowercase).
- The default Web port number is 80 and the default media port number is 9988.

Statement:

Some information contained in this manual may differ from the actual product. For any problems you cannot solve with the use of this manual, please contact our technical support or the authorized dealers. This manual may be subject change without prior notice.

1. Overview

1.1 Range of Application

The network cameras with powerful image processing capacity may be applied at various public places such as mall, supermarket, school, factory and workshop, as well as in environments requiring HD video image such as bank and traffic control system, as shown below:



1.2 Product Description

An IP camera is a digital online surveillance camera embedded with Web server and capable of independent operation, giving user access to real-time monitoring through web browser or client software from any place across the world.

IP camera is based on the latest digital solution, an integrated media processing platform for audio/video acquisition, compression and network transmission on a single board. It is in compliance with H.264/H265 High Profile encoding standards. Any remote user can have access to real-time monitoring by entering the IP address or domain name of the IP camera in web browser. This network camera solution is applicable to residential or business environments as well as a wide range of situations requiring remote network video monitoring and transmission. The IP camera products are easy to install and operate.

The IP cameras can be managed by several users with different authorization levels.

IP cameras allow motion detection, and send e-mail and snapshot taken in case of emergency and store the image or video snapshot in SD card for retrieval.

1.3 Operation Environment

Operating system: Windows 7/Windows 8/Windows 2008 (32/64-bit),

Windows 2003/Windows XP/Windows 2000 (32-bit)

CPU: Intel Core Duo II dual-core processor or higher

Memory: 1G or more Video memory: 256M or more

Display: 1024 × 768 or higher resolution

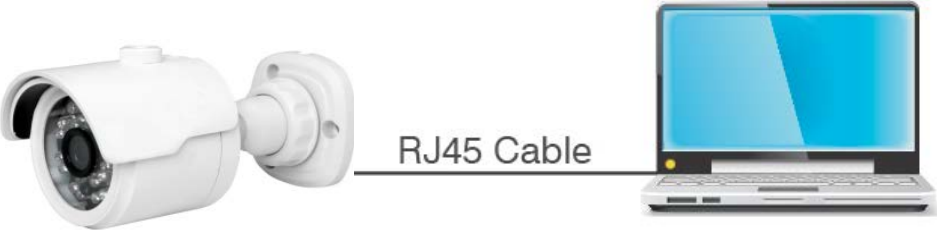
IE: IE 6.0 or higher version

2. Device Connection

IP camera can be connected in two ways:

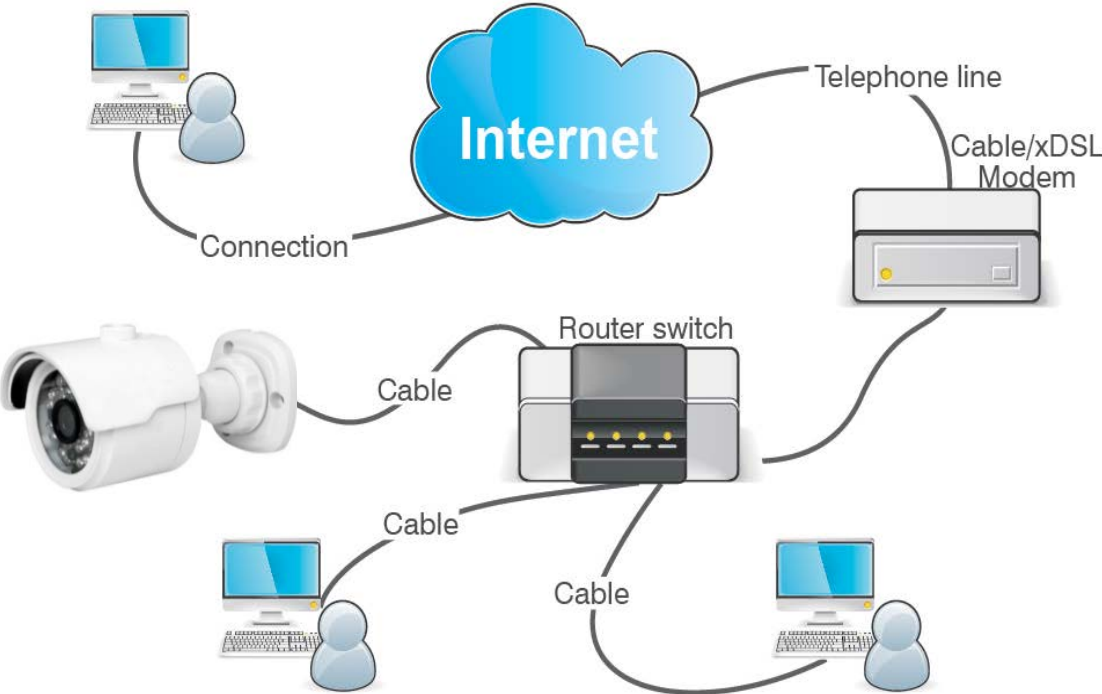
1. Connection to PC

Connect IP camera to PC via straight-through network cable, with power input connected to a DC 12V adaptor, and set the IP addresses of the PC and IP camera in one network segment. The IP camera will communicate with PC within one minute after being powered on if the network operates normally.



2. Connection to router/switch

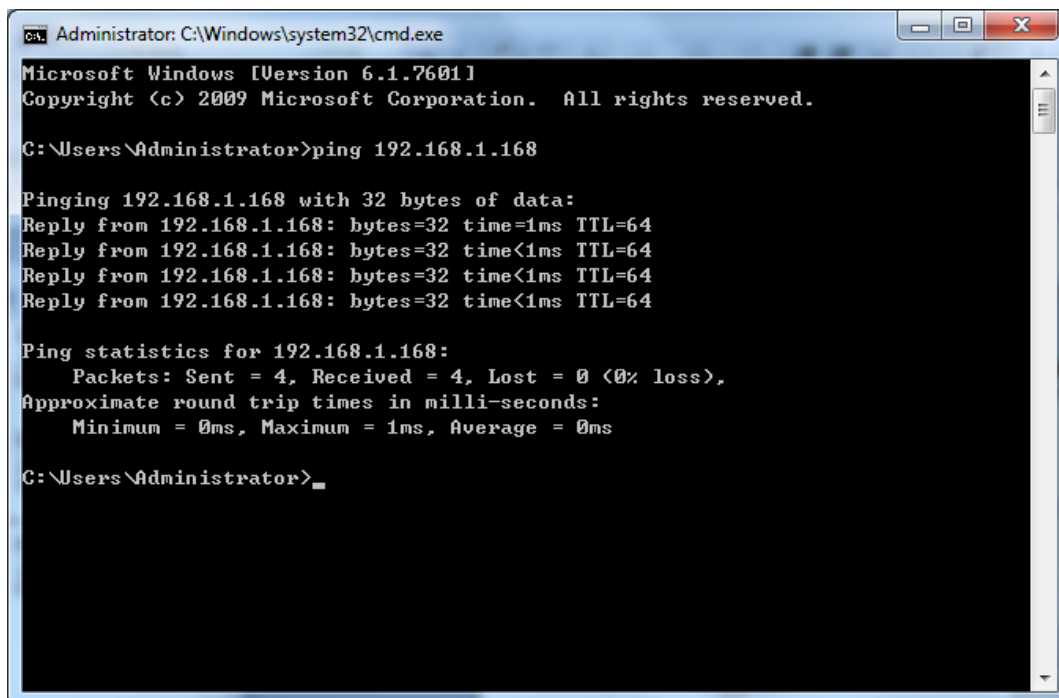
This is more commonly used in connecting the IP camera to Internet, where the camera and PC are connected to LAN ports of a router/switch, with gateway of the camera set to the IP address of the router.



3. Device Operation Instructions

3.1 Check Connection

1. The default factory IP address for IP camera is 192.168.1.168 and the subnet mask is 255.255.255.0. Allocate to your computer an IP address in the same network segment as the IP camera, for example, 192.168.1.69, and a same subnet mask as that of the IP camera.
2. Test whether the IP camera is connected properly and started normally by clicking on Start > Run and entering "cmd" and pressing ENTER, and entering "ping 192.168.1.168" in the command line window to



```
Administrator: C:\Windows\system32\cmd.exe
Microsoft Windows [Version 6.1.7601]
Copyright (c) 2009 Microsoft Corporation. All rights reserved.

C:\Users\Administrator>ping 192.168.1.168

Pinging 192.168.1.168 with 32 bytes of data:
Reply from 192.168.1.168: bytes=32 time=1ms TTL=64
Reply from 192.168.1.168: bytes=32 time<1ms TTL=64
Reply from 192.168.1.168: bytes=32 time<1ms TTL=64
Reply from 192.168.1.168: bytes=32 time<1ms TTL=64

Ping statistics for 192.168.1.168:
    Packets: Sent = 4, Received = 4, Lost = 0 (0% loss),
    Approximate round trip times in milli-seconds:
        Minimum = 0ms, Maximum = 1ms, Average = 0ms

C:\Users\Administrator>
```

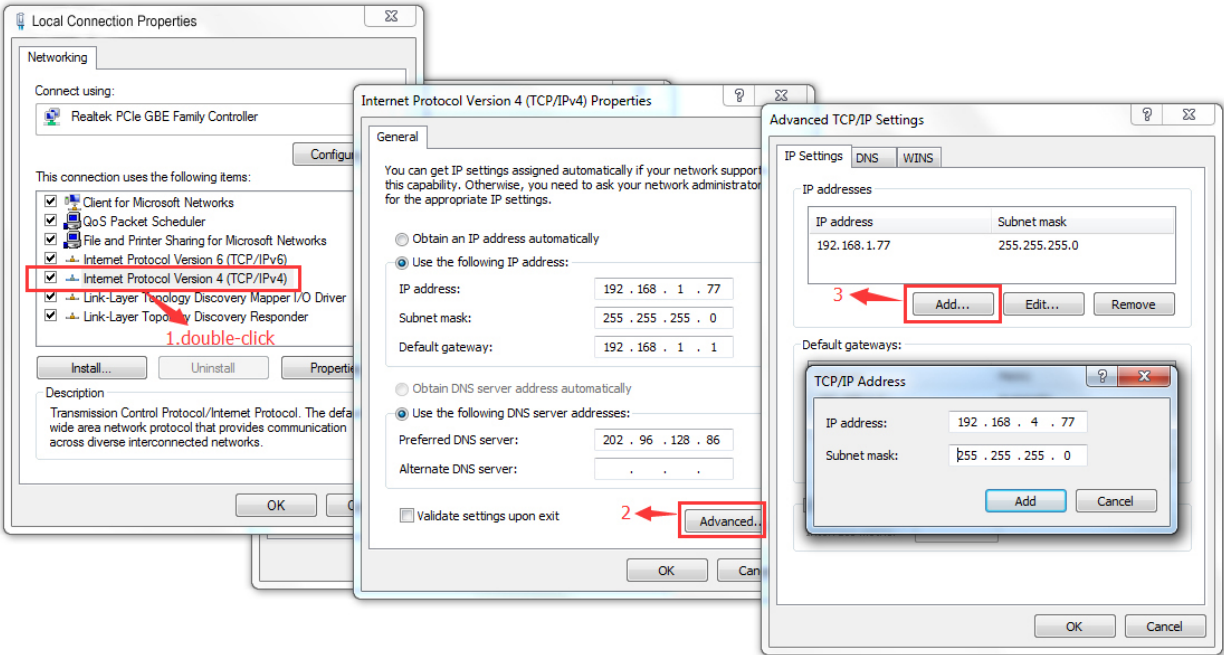
Check whether the IP camera is accessible. If the PING command is executed successfully, it indicates that the IP camera operates normally and the network is connected properly. If the PING command fails, check IP address and gateway setting of the PC and connectivity of the network.

3.2 Searching Device

Tips: IPC Device Search may be used for device searching across network segments. Before running IPC

Device Search, click on the local connection icon  at the lower right corner of the desktop;

- 1. Add IP addresses of several network segments in TCP/IP setting for local connection (as shown below). By running the searching tool you can search any device with IP address in the same network segment.



IPC Device Search uses multicast protocol for device searching across segments but any firewall forbids traffic of multicast data packets, so any firewall must be disabled in order that network the information on device can be acquired.

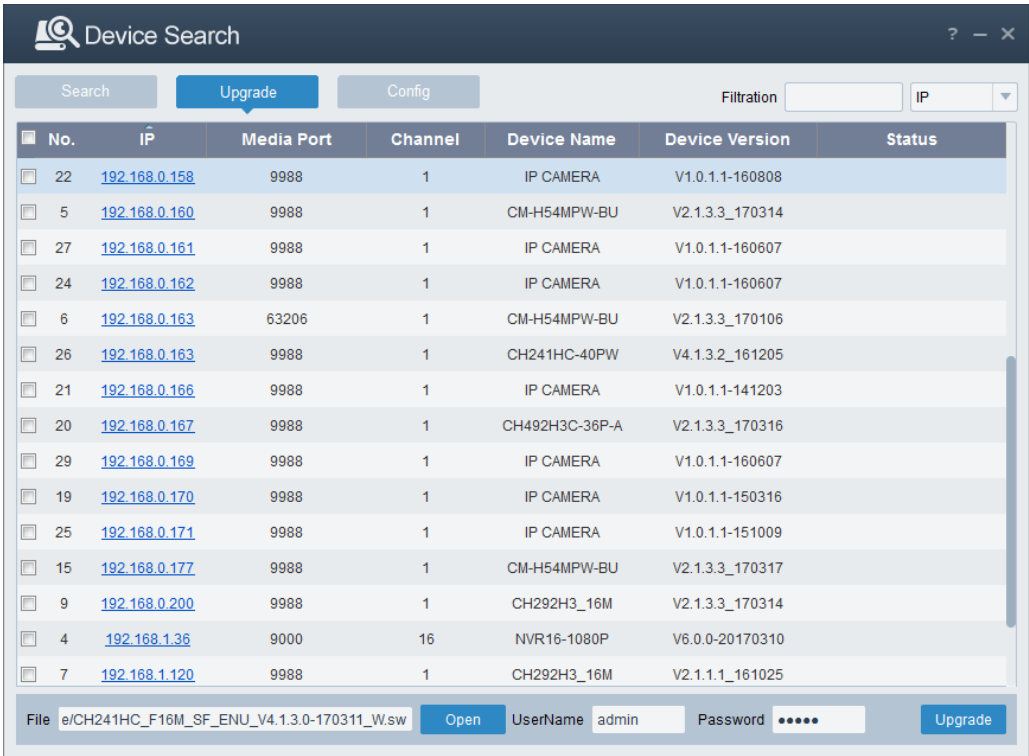
Online device searching procedure



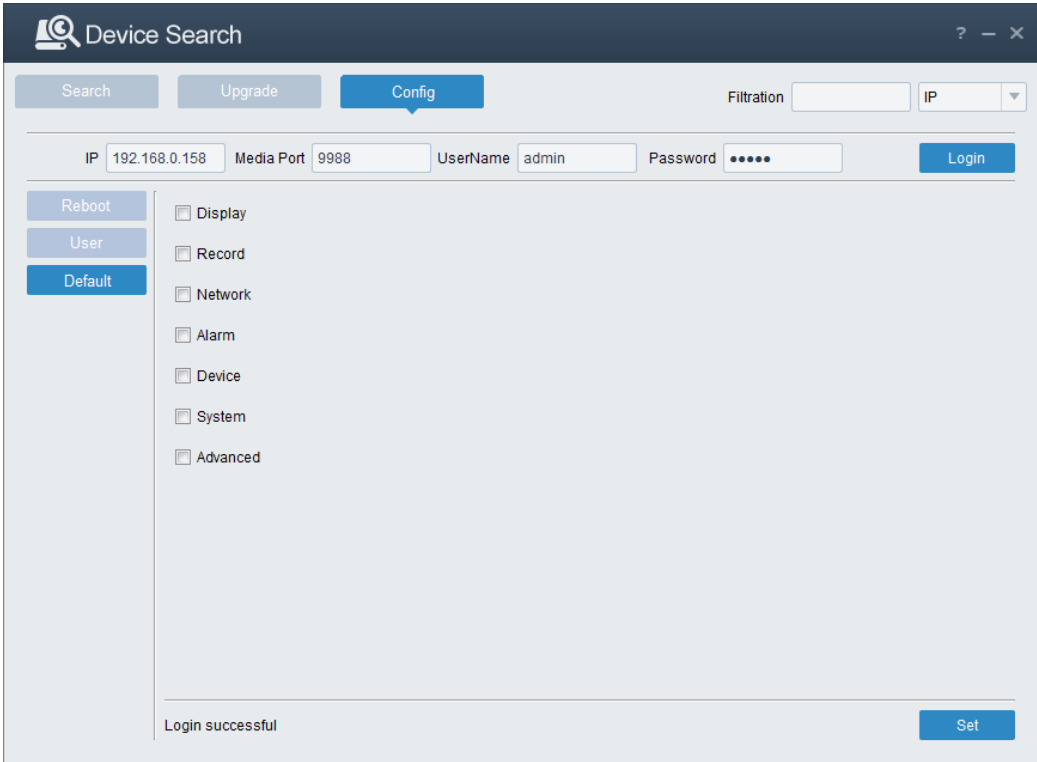
- 1. Run IPC Device Search by double clicking icon . It will search and display any online IPC and its IP address, port number, number of channels, device type and version, subnet mask, gateway, MAC address and connection pattern.

No.	IP	Media Port	Web Port	Channel	Device Name	Device Version	Net M
7	192.168.1.201	9988	80	1	CH293H3_16M	V2.1.3.3_170317	255.255.
10	192.168.1.200	9988	80	1	CM-H54MPW-BU	V2.1.3.3_170317	255.255.
12	192.168.1.120	9988	80	1	CH292H3_16M	V2.1.1.1_161025	255.255.
3	192.168.1.36	9000	80	16	NVR16-1080P	V6.0.0-20170310	255.255.
5	192.168.0.200	9988	80	1	CH292H3_16M	V2.1.3.3_170314	255.255.
8	192.168.0.177	9988	80	1	CM-H54MPW-BU	V2.1.3.3_170317	255.255.
20	192.168.0.171	9988	80	1	IP CAMERA	V1.0.1.1-151009	255.255.
17	192.168.0.170	9988	80	1	IP CAMERA	V1.0.1.1-150316	255.255.
21	192.168.0.169	9988	80	1	IP CAMERA	V1.0.1.1-160607	255.255.
9	192.168.0.167	9988	80	1	CH492H3C-36P-A	V2.1.3.3_170316	255.255.
19	192.168.0.166	9988	80	1	IP CAMERA	V1.0.1.1-141203	255.255.
18	192.168.0.163	63206	63210	1	CM-H54MPW-BU	V2.1.3.3_170106	255.255.
26	192.168.0.162	9988	80	1	IP CAMERA	V1.0.1.1-160607	255.255.
27	192.168.0.161	9988	80	1	IP CAMERA	V1.0.1.1-160607	255.255.
4	192.168.0.160	9988	80	1	CM-H54MPW-BU	V2.1.3.3_170314	255.255.
23	192.168.0.159	9988	80	1	CH295H3_16M	V2.1.3.3_170314	255.255.

Upgrade: it can offer 1pcs or more than 1pcs IP camera upgrade. Please choose the IP camera you want to upgrade in the left frame, Open the icon to choose the software you want, put in the user name and password, then press the right corner button to upgrade.



Config: Double-click the selected camera in the search page, turn to the Config page to reboot the camera, change passwords, and reset the camera.

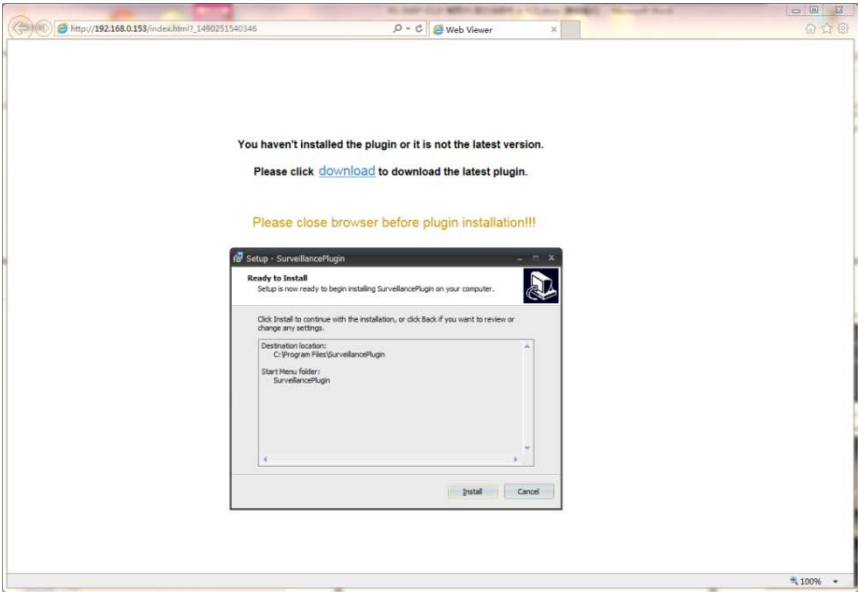


3.3 Installation of Controls and Login to System

Before using IE (Internet Explorer) browser to access the IP camera for the first time, related plug-in components must be installed by following the procedure below:

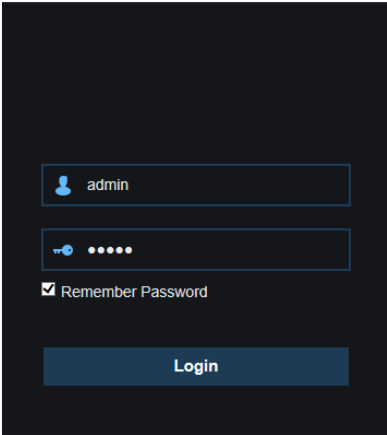
Access IP address of the IP camera to automatically load the controls from it.

In a pop-up plug-in installation dialog box, choose an installation option to perform the installation process.

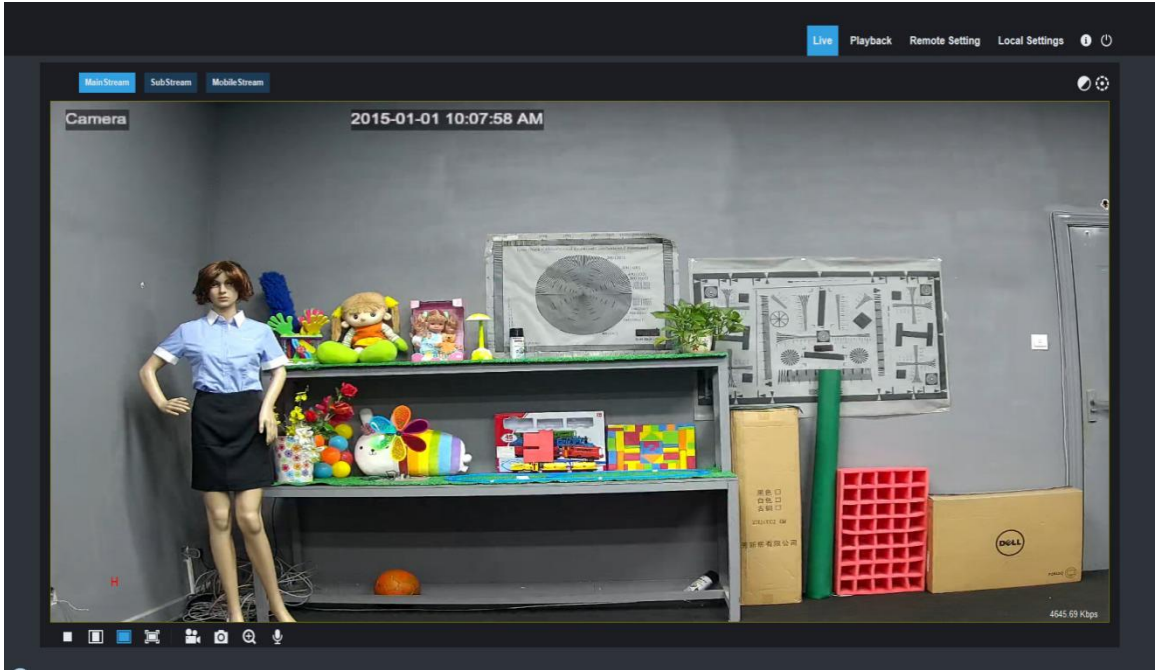


3.3.1 Preview

Operate IE and enter the IP address of the camera (http://192.168.1.168) to open a login box as shown below:



In the login box you can choose a language for the IE client. Enter your user name (admin by default) and password (admin by default) and then press OK to open a preview frame as shown below:



Some buttons in the preview frame are described below.



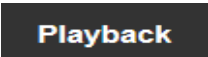
: Color setting button, for setting of color, brightness, contrast, saturation and sharpness of the frame.



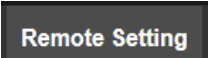
:PTZ CONTROL press the icon ,then it show below picture:



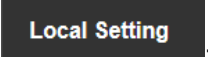
: It has eight difference angle to control in the circle button, 0-10,it means difference PTZ speed, ZOOM:adjust lens FOCUS: fix lens.Restore: restore factory setting .



: read the recording file from SD card, and then playback from browser.



: Access to device setting menu, for customized setting of various device parameters.

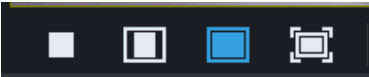


: For setting of snapshot, video file type and storage path.

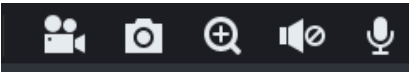


: Help information (including current user, Web browser and plug-in versions), logout button,

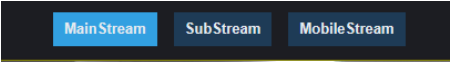
for returning to the login page.



:Video preview switch enable/disable, original preview frame ratio, automatic preview frame ratio, full preview frame from the left to the right.

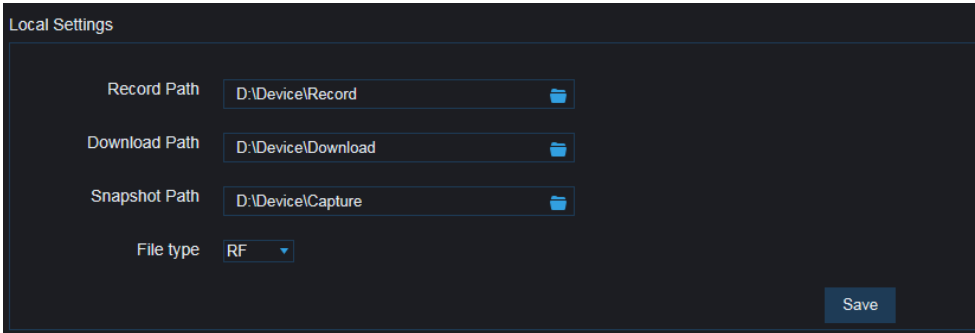


: Preview control buttons - Zoon-In/Out, Open Video, Snap and Sound On/Off, Mircophone arranged from the left to the right.



: Dynamic switching of bit stream for the preview frame.

Click Path Configuration button to pop up the following dialog box: In this dialog box you can set video storage location, paths for download of remote file and storage of image snapshot, file type (RF by default, in H265 encoding) and video recording duration.



3.3.2 Playback (optional function)

Click record file to playback, select the corresponding date, then click the Search to go to below page

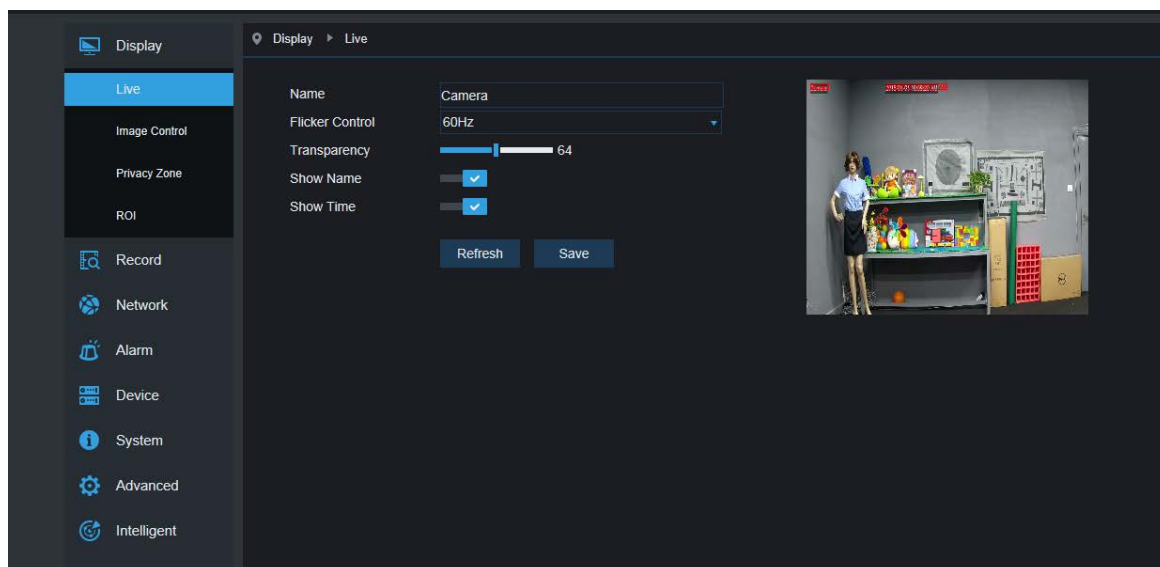


User can search video by file type as needed, and operate the video through the simple tool on the toolbar, e.g. open/stop video , bit stream video, recording, snapshot, download recording , quick motion video playback, Sound On/Off.

4 Parameter Setting

4.1 Display Configuration

Click on Parameter Setting to open the page as below (preview setting page by default):



Name of channel: name of the IP camera

Display of channel: Choose to display or conceal it.

Time display: Choose to display or conceal it.

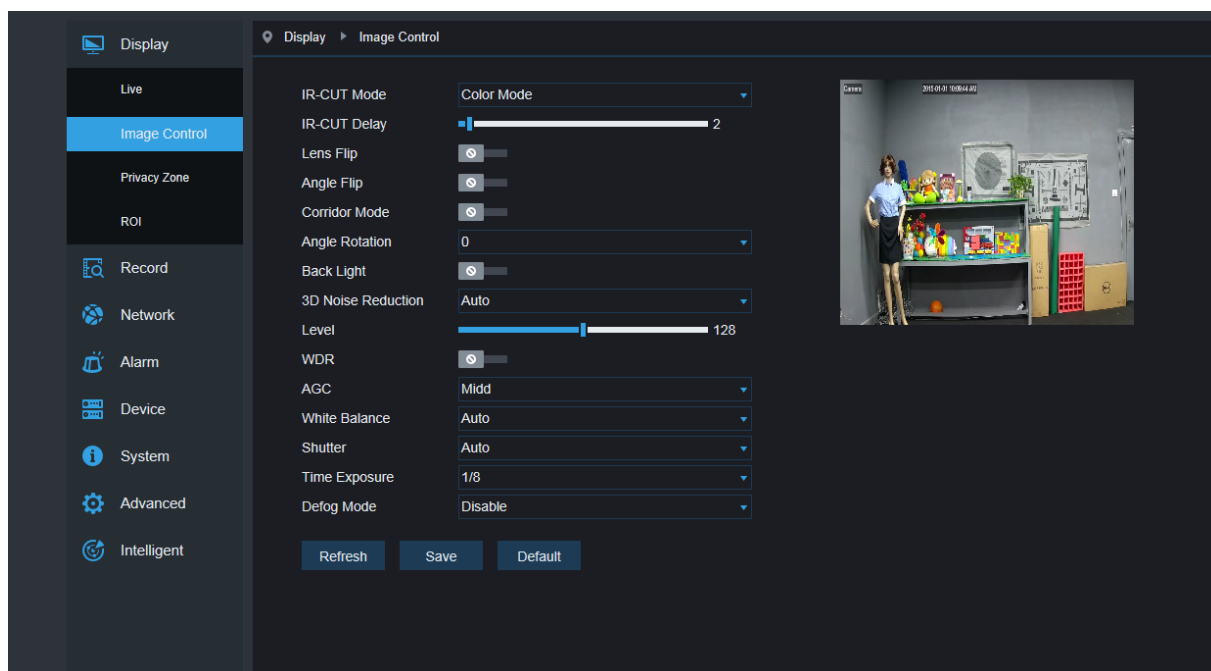
Blinking control: Choose 50Hz, 60Hz or disable it.

Transparency: Choose transparency of display of name of channel and time on the preview frame (smaller value indicates higher transparency)

OSD: the text in red color on the frame; you can locate display of the name of channel and time by dragging it in the preview frame.

4.2 Image Control

Click on Image Control in Display Configuration to open the following page:



IR-Cut Model: Classified into GPIO Automatic, Colored, and Black-White models.

Delay: IR-cut switching delay.

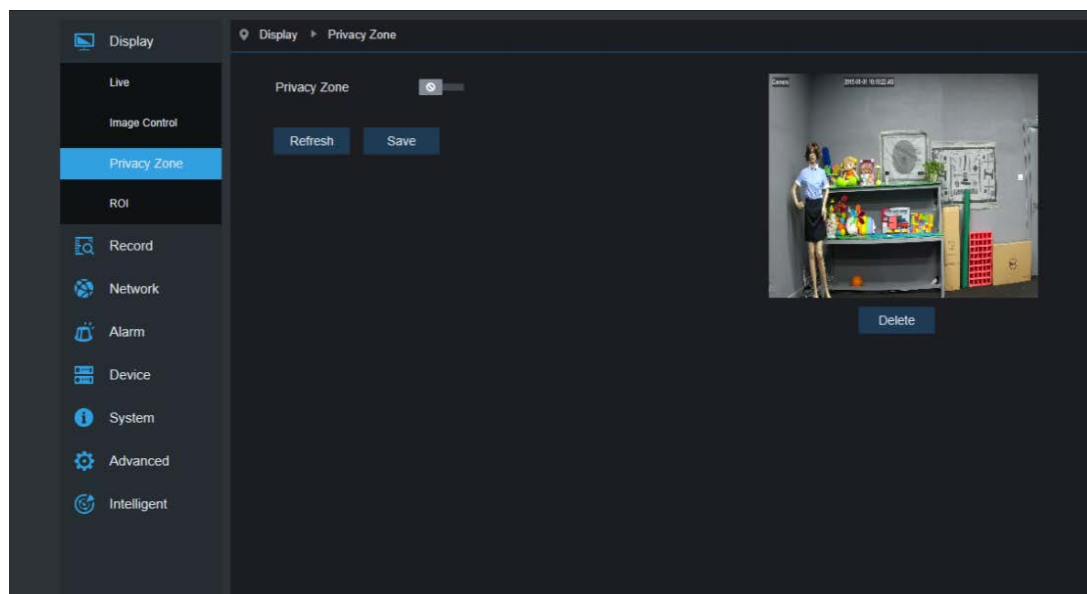
Image Flip-Over: including flip horizontal, flip vertical, Corridor mode and Angle rotation (0°、180°)

Image Control: backlight compensation, 3D noise reduction, WDR, automatic gain, shutter speed, exposure time and de-moist model.

Note: Below 2MP device ,it doesn't support Corridor mode and Angle rotation , fog mode.

4.3 Video Blocking

Click on Video Blocking in Display Configuration to open the following page:



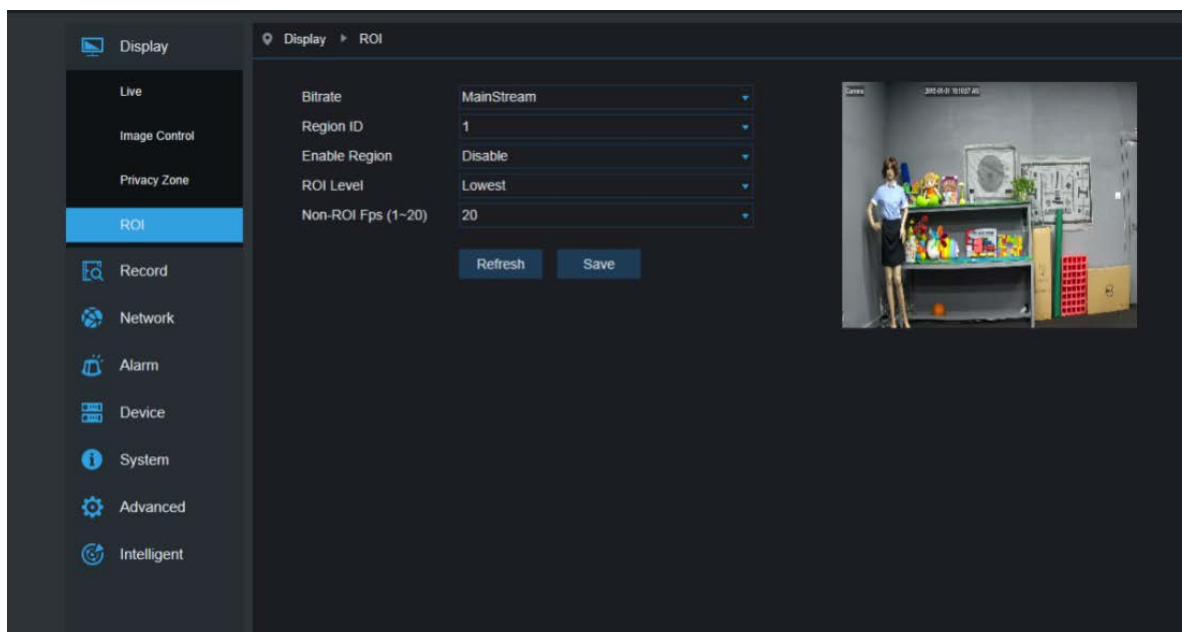
Procedure of setting video blocking:

1. Check Enable Video Blocking
2. Press down and hold the left mouse button and drag out a area for video blocking (up to four areas at one time)
3. Click on Save to enable the video blocking area.

Remove: After clicking Refresh, choose a blocked area by clicking it and then click Remove and click Save to remove it.

4.4 ROI (if applicable)

Click on ROI in Display Configuration to open the following page:



Procedure of setting ROI:

1. Choose an area of application
2. Press down and hold the left mouse button and drag out a ROI area (only one ROI can be set for each area)
3. Click on Save to apply the ROI area.

Bit stream type: Choose bit stream effective for ROI among Main Bit Stream, Sub-Bit Stream and Cell Phone Stream.

Area Numbering: Up to 8 ROI areas can be set in one bit stream.

Enable ROI area: Enable or disable ROI area

Area image quality: Set quality of the image in the area (relative quality, absolute quality)

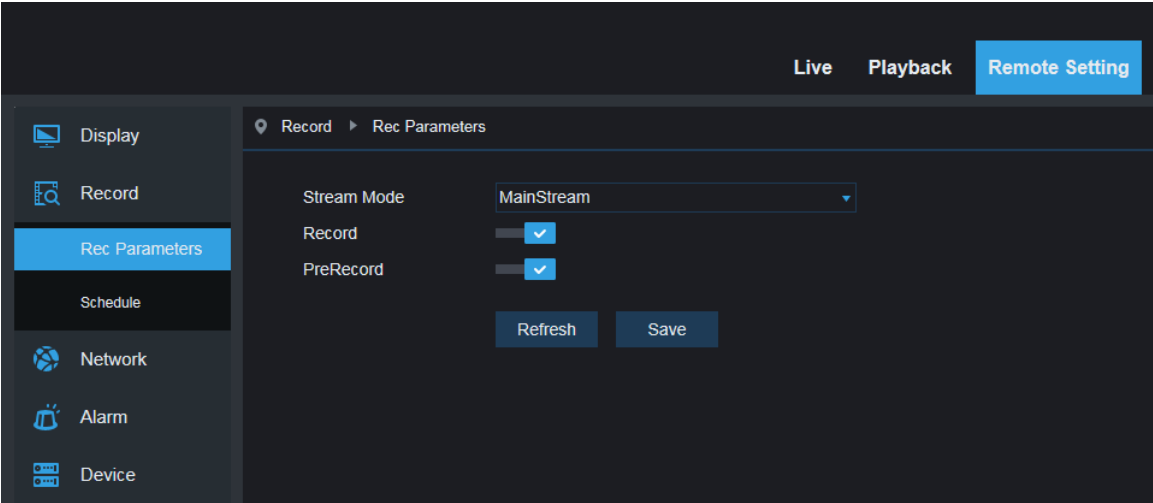
ROI level: Set ROI level in one bit stream; larger value indicates higher-quality image in ROI area (1~6 Levels)

Non-ROI frame rate: Set frame rate out of RIO area; smaller value indicates higher-quality image in ROI area. Range of frame rate is in relation to video standard and resolution. (Note: Different non-ROI frame rates may be allocated to different ROI areas, but the minimum value among them is used as the frame rate to be applied for the non-ROI area on the preview frame.)

5.Record Parameters

5.1Rec Parameters

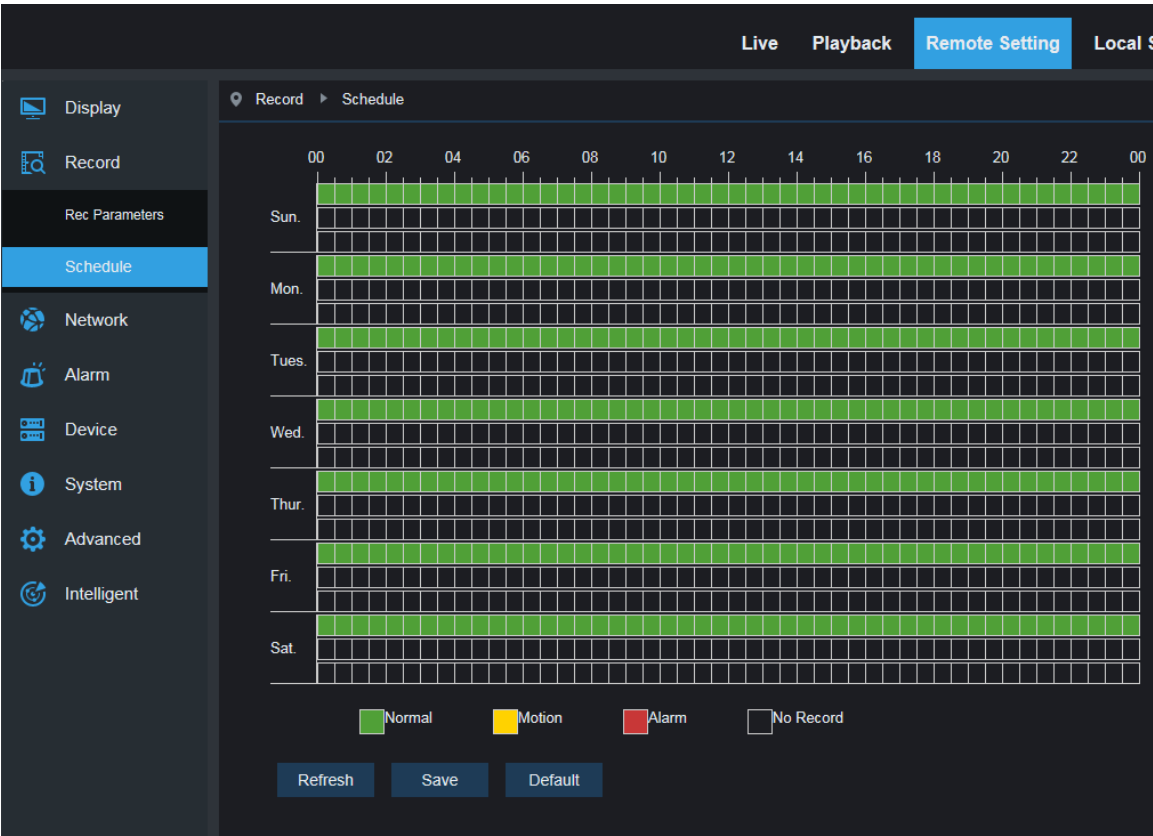
Click Rec Parameters under the menu Record, go to below page



This function is to control the record, pre record and record type (main stream and substream)

5.2Schedule

Click Schedule under the menu Record, then go to the page as below

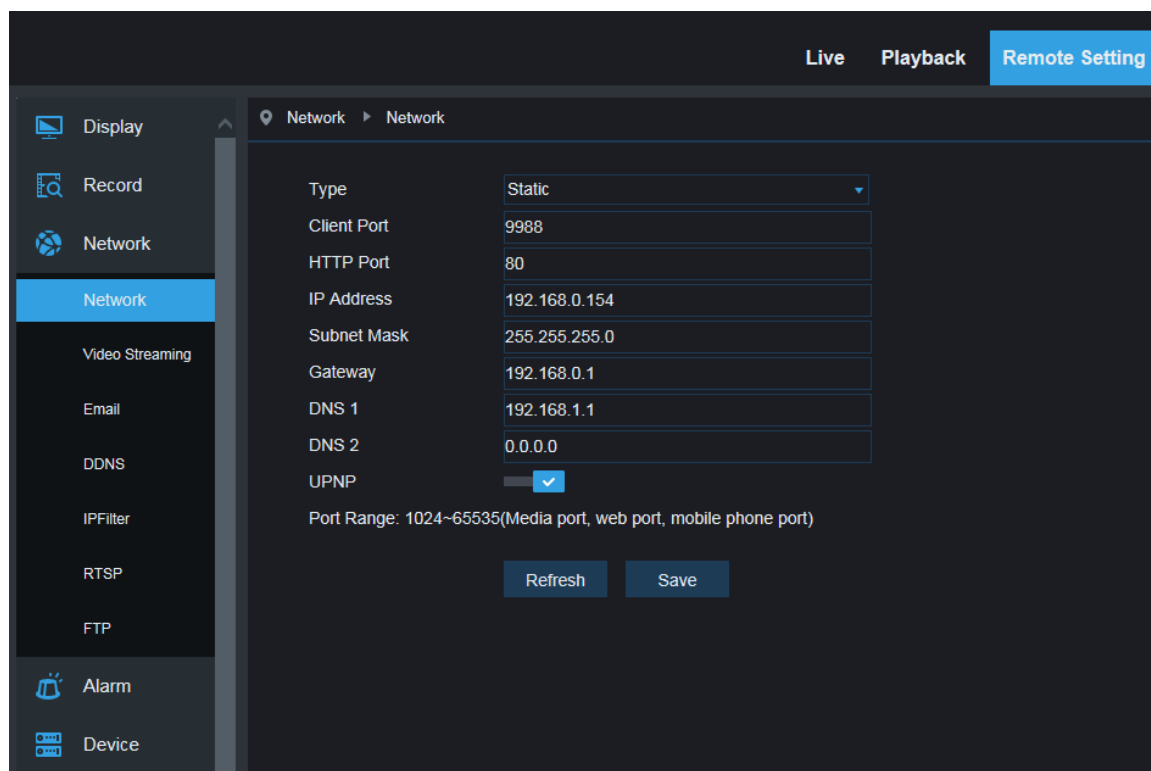


As image: one grid in the table is 30 minutes, green is normal record, yellow is motion detection alarm, red is I/O. User can setup according to private requirement to choose different record type and time.

6. Network Parameters

6.1 Network Parameters

Click on Network Parameters in Network Parameter Menu to open the following page:



Networking mode: DHCP (Automatically Acquired), Manually Configured and PPPOE; the default is Manually Configured

Media port: Media port for IPC

Web port: Web port for IPC

IP address: IP address of IPC

Subnet mast: Subnet mast of IPC

Default gateway: Default gateway of the device

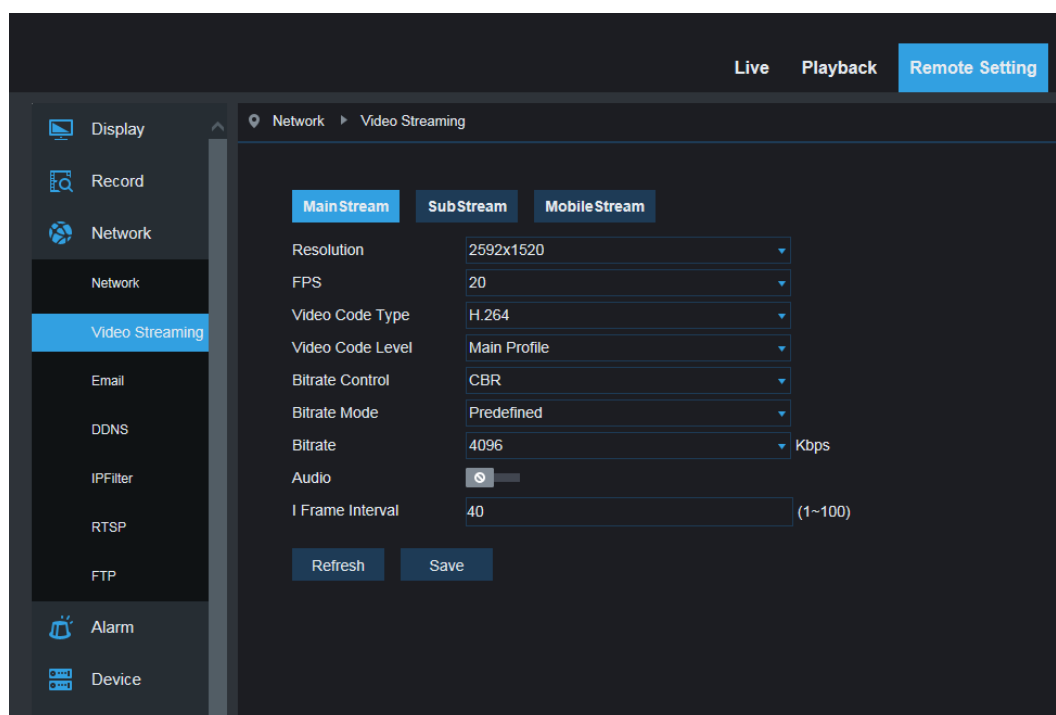
Preferred/Alternate DNS server: Set DNS server

UPNP: Enable or disable UPNP function for the device (enabled by default)

Note: To enable UPNP, the media/web/cell phone port should be set to a value between 1024-65535; the media port is used for connection of proprietary cell phone client; cell phone port is used for connection of the mobile client.

6.2 Bit stream setting

Click on Bit Stream Setting in Network Parameter Menu to open the following page:



By default the available bit streams are: main bit stream, sub-bit stream and cell phone bit stream.

You can set resolution, frame rate, video encoding, encoding level, audio, I frame interval, variable frame rate and bit stream size respectively for main bit stream, sub-bit stream and cell phone bit stream.

Resolution: Set resolutions respectively for bit streams: The highest resolution for main bit stream is 2048x1536. The higher resolution for sub-bit stream is 704x480. The only resolution available for cell phone bit stream is 320x480.

Note: The higher resolution for main bit stream of 3MP Series is 2048*1536 (frame rate of 30 fps). The higher resolution for main bit stream of 4MP Series is 2592*1520 (frame rate of 20 fps). The higher resolution for main bit stream of 5MP Series is 2592*1944 (frame rate of 15 fps). The higher resolution for main bit stream of 8MP Series is 3840x2160 (frame rate of 30 fps). The higher resolution for main bit stream of 2MP Series is 1920*1080 (frame rate of 30 fps).

Frame rate: When refresh rate is 50Hz, the maximum available frame rate is 25 fps. When refresh rate is 60Hz, the maximum available frame rate is 30 fps.

Video encoding: Set video encoding (H265/H264) for each bit stream.

Audio: Enable audio for each bit stream.

I frame interval: Set I frame interval.

Bitrate control: Set constant or variable bitrate for bit stream.

Bit stream: Set bit stream value by choosing fixed value or customizing it.

Note: Range of main bit stream is 256-8192.

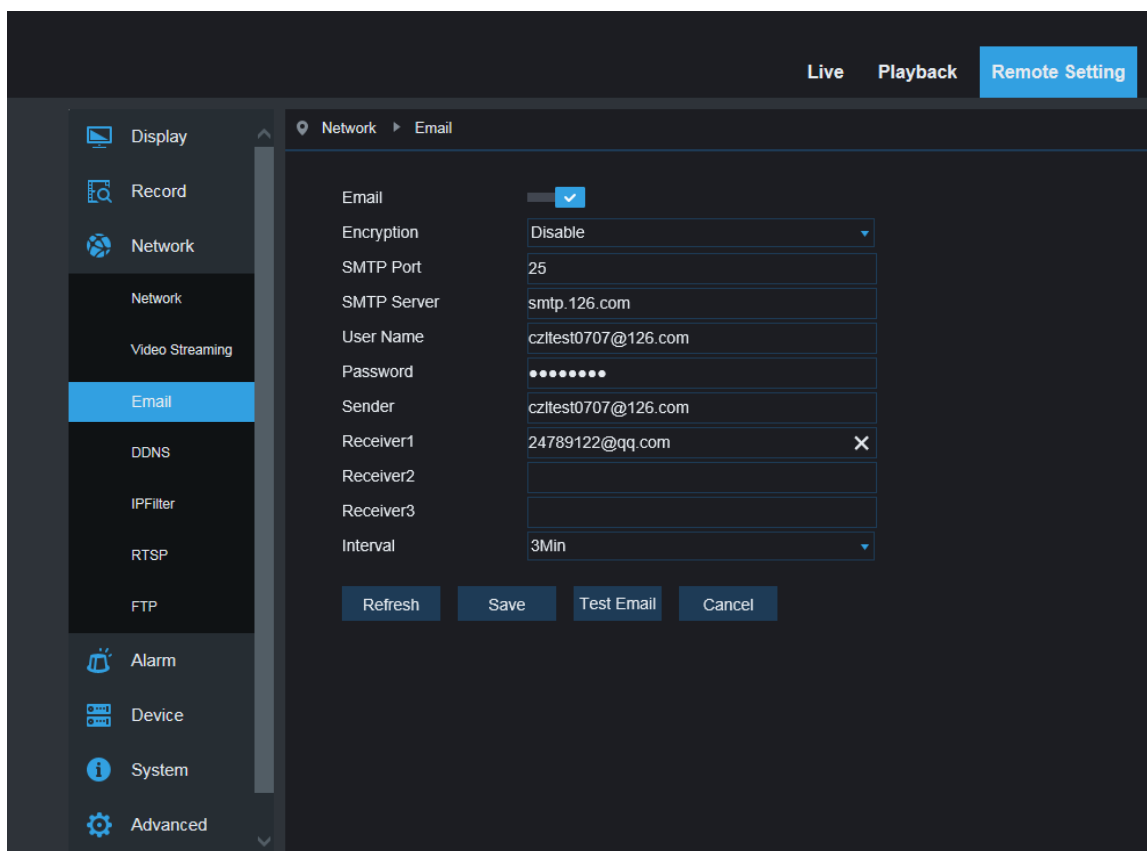
Range of sub-bit stream is 128-4096.

Range of cell phone bit stream is 8-1536.

Video encoding and encoding level are unavailable in setting page of IP camera of 2MP Series.

6.3 E-Mail Configuration

Click on E-Mail Configuration in Network Parameter menu to open the following page:



E-Mail Configuration: mail service setting - used with alarm function to upload images snapped to the mail server.

Enable e-mail: Enable or disable e-mail function.

SSL: ON/OFF SSL proto.

Port: The default port number is 25 (mail serve port).

SMTP server: Enter the address of mail server.

Address of sender: Address of sending mailbox.

Password of sender: Password of sending mailbox.

Address of recipient: Address of receiving mailbox.

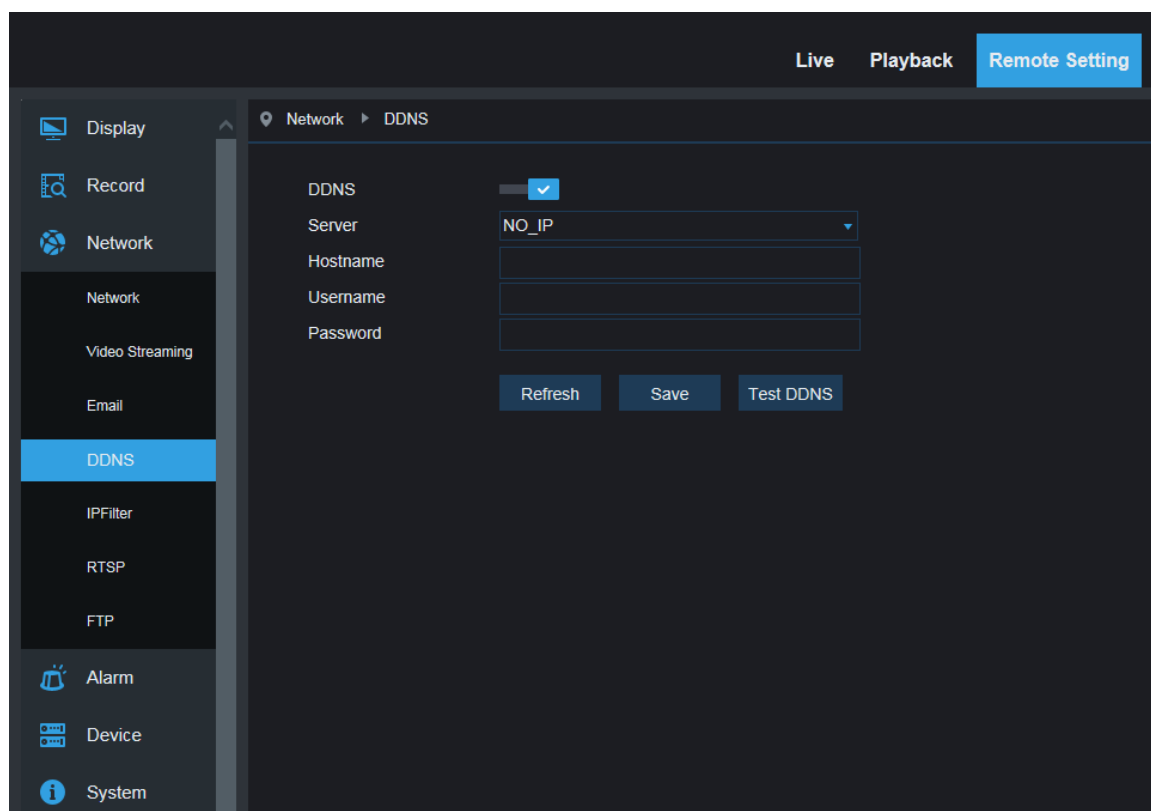
Time interval: Time interval for sending mail (1 minute, 3 minute, 5 minute, 10 minute).

E-mail test: Click it to test whether the mailbox is configured properly by sending a test mail to the recipient's mailbox.

6.4 DDNS Configuration

Click on DDNS Configuration in Network Parameter menu to open the following page:

DDNS configuration: Dynamic DNS configuration - used with server for access from an extranet.



Enable DDNS: Enable or disable it.

Address of server: Choose "3322".

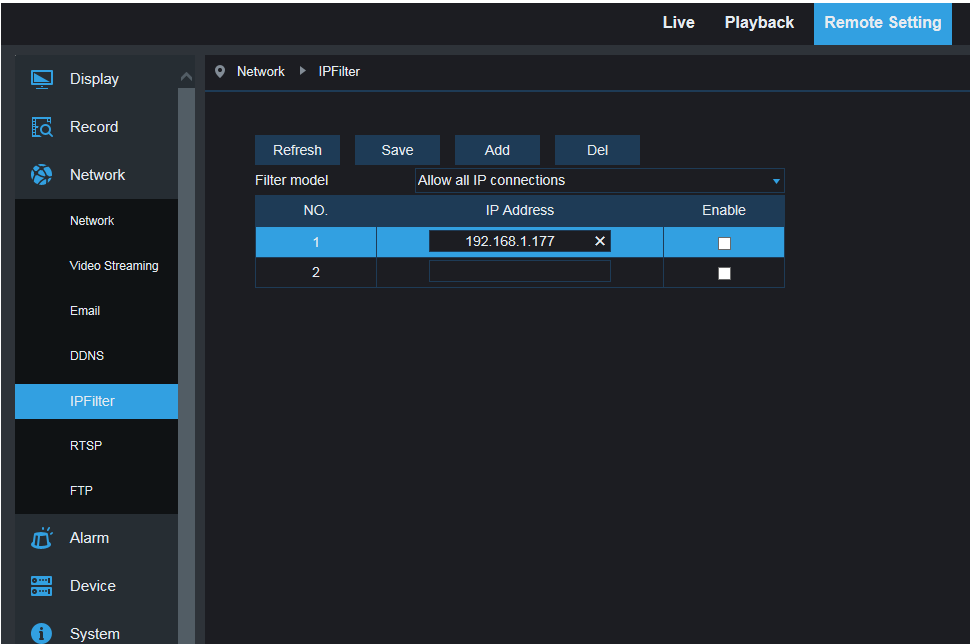
Name of host: Enter the name of active server

User name: Name of the user

Password: Password of the user

6.5 IP Filtering

Click on IP Filtering in Network Parameter menu to open the following page:



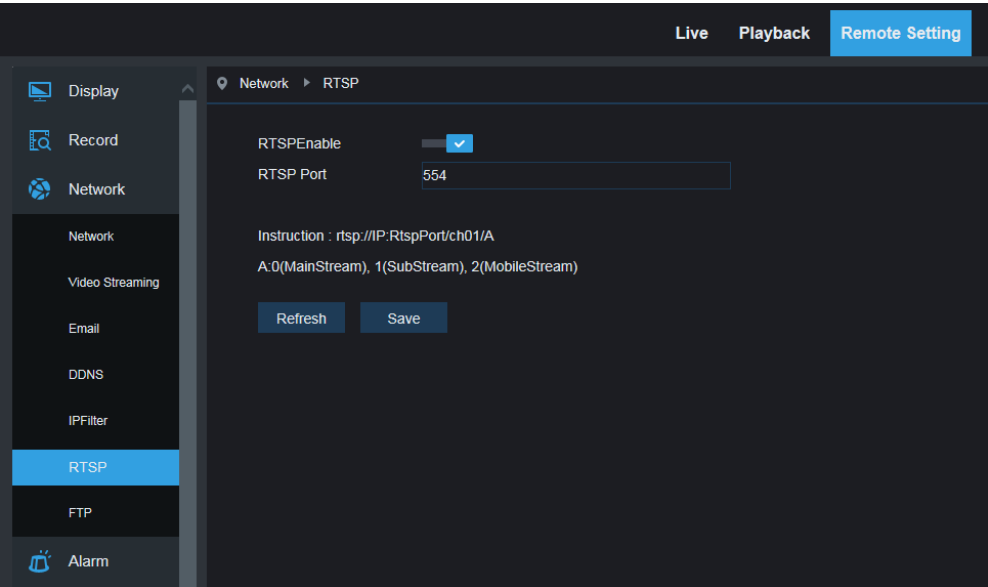
Filtering mode: Three modes are available (Allow all IP connections, Allow all IP connections as set, Forbid IP connection as set).

Add: Add any allowed or forbidden IP address

Delete: Delete any IP address added previously

6.6 RTSP

Click on RTSP in Network Parameter menu to open the following page:



RTSP Enabling: Enable or disable RTSP. RTSP is enabled by default. After it is disabled, it will not be found with ONVIF.

RTSP Port: The default port number is 554, and can be changed to another value between 1024 and 65535. Modification to the parameter will restart the system.

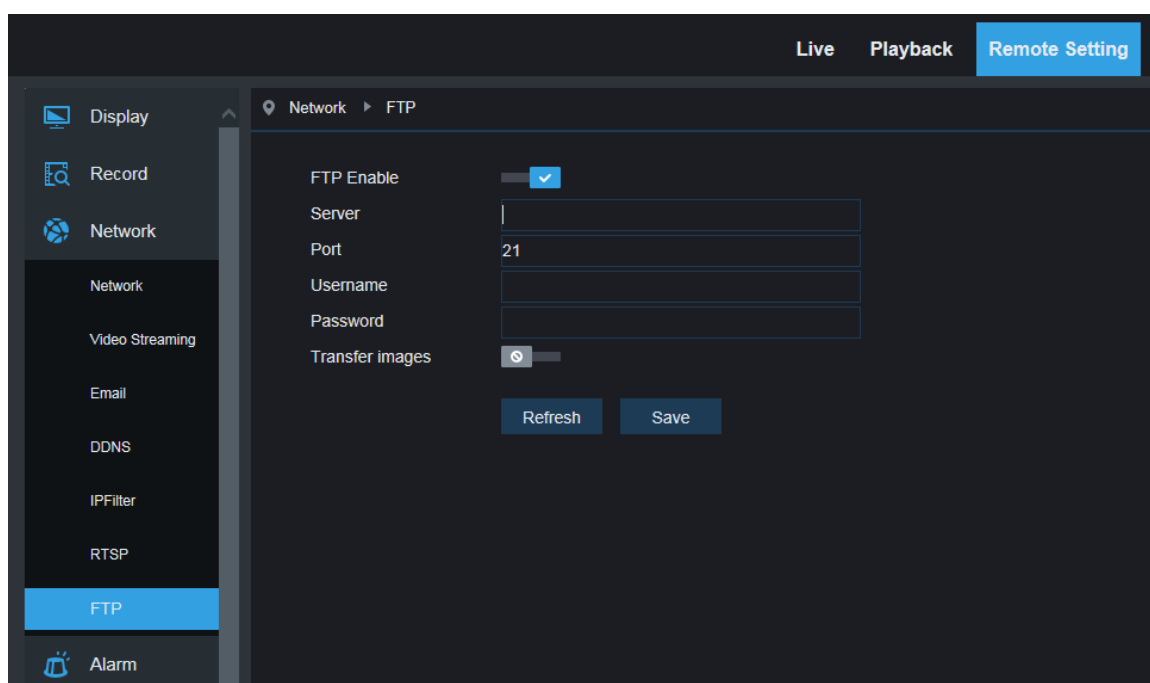
Operation Instructions:

For IP cameras of 3MP/4MP/5MP/8MP Series: rtsp://IP:Port/ch00/A A:0 (main bit stream), 1(sub-bit stream), 2 (cell phone bit stream)

For IP cameras of 2MP Series: rtsp://IP:Port /A A:0 (main bit stream), 1(sub-bit stream), 2 (cell phone bit stream)

6.7 FTP

Click on FTP in Network Parameter menu to open the following page:



FTP: FTP service setting - used with alarm function to upload images or videos snapped to the FTP server.

FTP: Enable or disable it.

User name: The user name for access to FTP service

Password: The password for access to FTP service

FTP Server: Enter the address of FTP server.

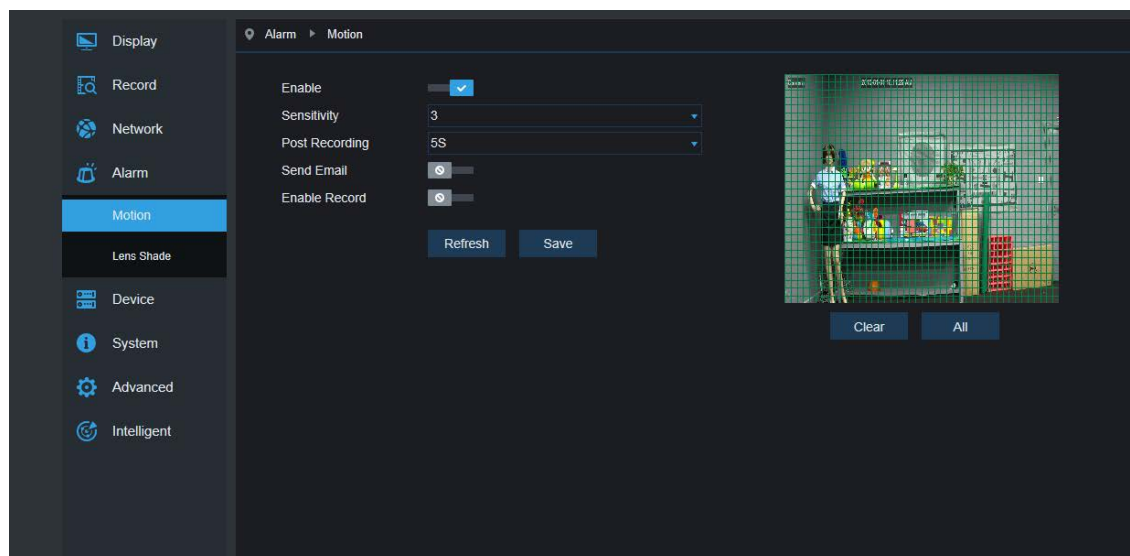
Port: FTP service port number; the default number is 21.

Transmit Image: Check it to transmit image

7. Alarm Parameter

7.1 Mobile Detection

Click on Mobile Detection in Alarm Parameter menu to open the following page:



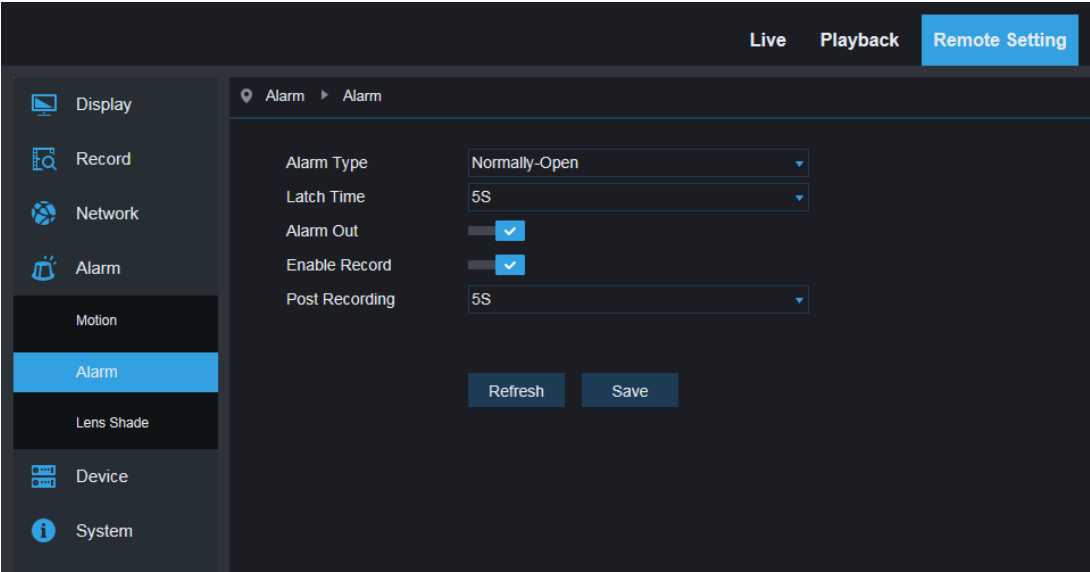
Procedure of setting Mobile Detection:

1. Check Enable Mobile Detection.
2. Press down and hold the left mouse button and drag out an area for mobile detection.
3. Set the sensitivity for mobile detection (ranging from 1 to 8; larger value indicates higher sensitivity).
4. Used with SMTP to enable mail delivery.
5. Click on Save to apply the settings.

(Note: When any object moves within the target area, a letter "M" in green color will be displayed on the preview frame)

7.2 I/O Alarm (if applicable)

Click on I/O Alarm in Alarm Parameter menu to open the following page:



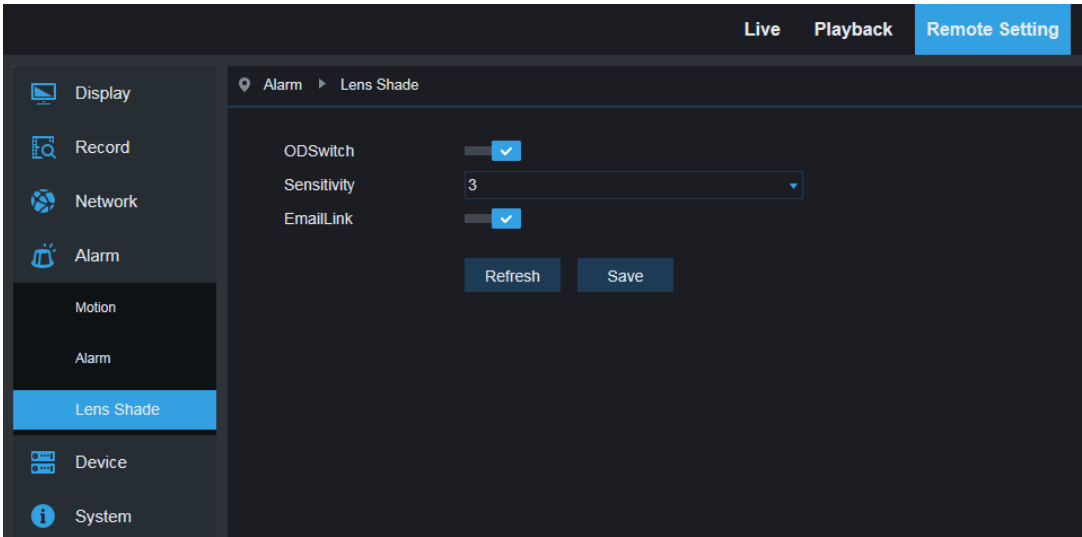
I/O Alarm Input: Enable or disable I/O alarm.

I/O Alarm Output Time: Set I/O alarm output time (10s, 20s, 40s, 60s)

Recording Delay Time: After checking Enable Triggered Recording, you can set recording delay time (5S/10S/20S/30S)

7.3 Lens Blocking

Click on Lens Blocking in Alarm Parameter menu to open the following page:



Check Lens Blocking option (checked by default) to activate Security Level and Mail Linkage options.

Security Level: Set security level for lens blocking (Level 1~8; larger value indicates higher security level)

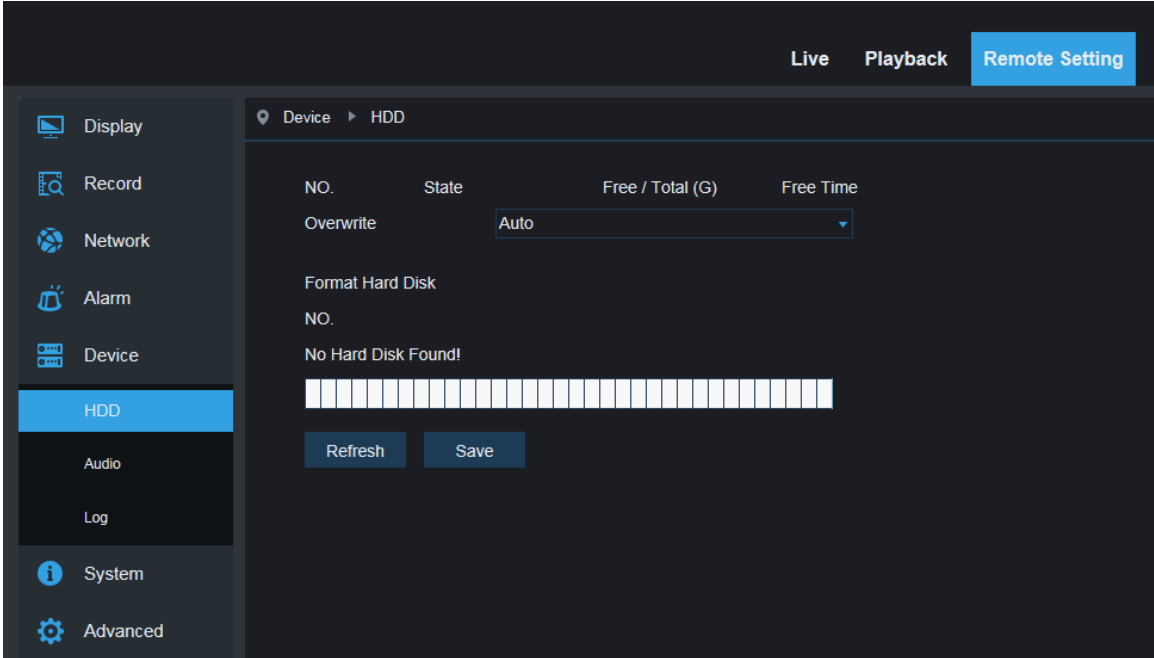
Mail Linkage: It is disabled by default. After enabled, it may be used with SMTP to enable mail delivery.

8. Device

It includes SD Card (optional function) Logs and Audio. Their interfaces and functions are described below.

8.1 SD Card (optional function)

Click SD Card under the menu Device, then go to below page



Insert SD card to device, system will auto detect the total capacity and balance capacity of SD card and give

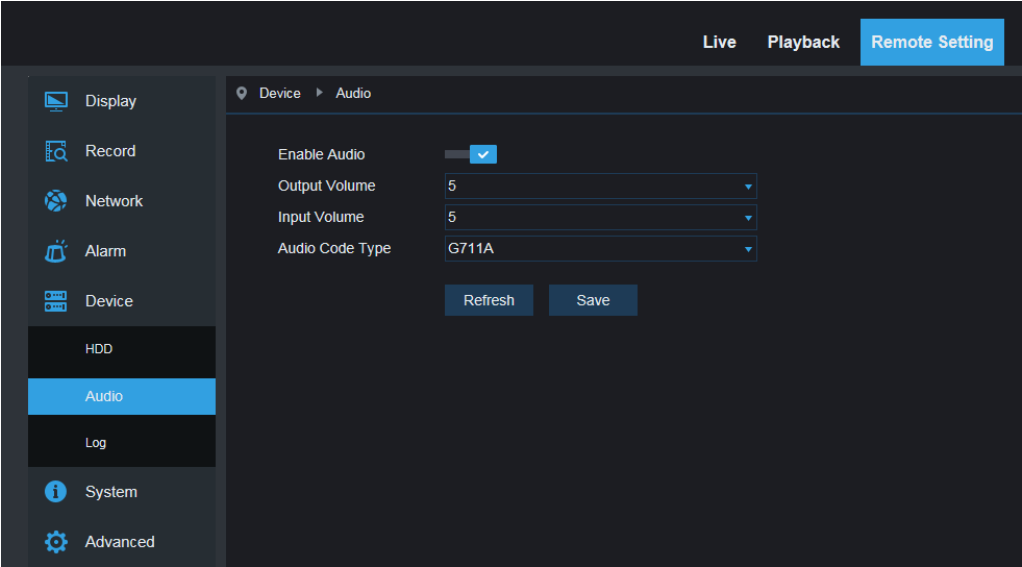
The information of time to record

SD Card Overwrite:when the capacity of SD card is 0, new record will overlap previous record(this function is default on)

SD Card Format: to format SD card

8.2 Audio

Click on Audio in Device menu to open the following page:



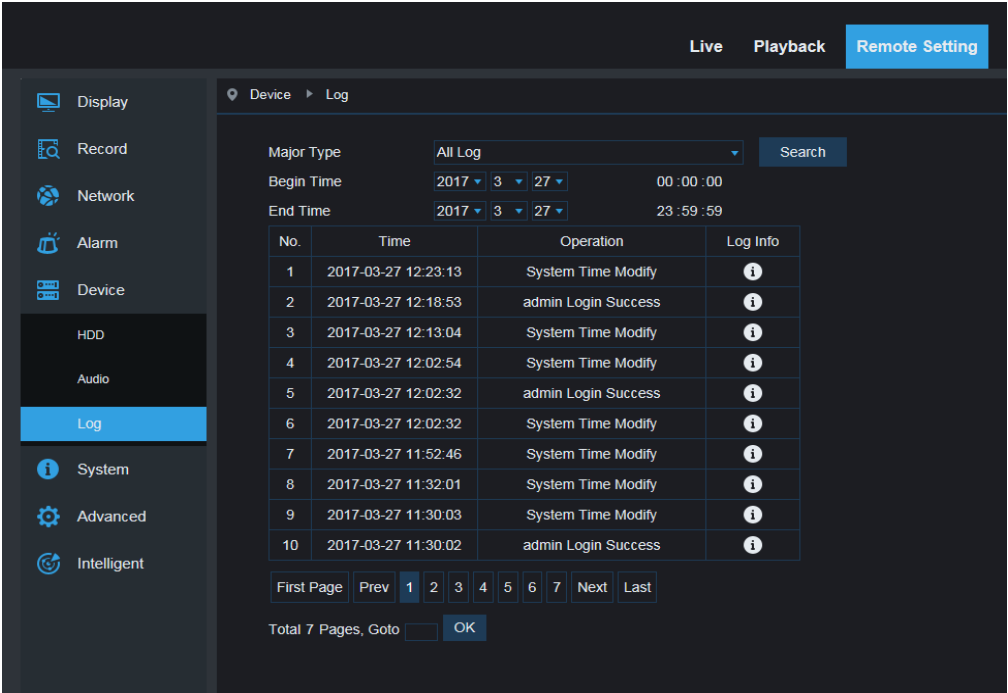
Procedure of setting Audio:

Check Open Audio option to access audio setting, and set audio input/output volume (ranging 0~10), and then click on Save to save the parameters set.

(Note: For application of audio function, the audio option in Bit Stream Setting needs to be enabled)

8.3 Logs

Click on Logs in Device menu to open the following page:



Log Type: Eight types of logs are available - system logs, network logs, parameter logs, alarm logs, user logs, recording logs, storage logs and all logs). Choose the starting and ending date/time for retrieval.

Click on "Search" to retrieve and display related logs in the table below.

Click on "Delete" to delete all device logs.

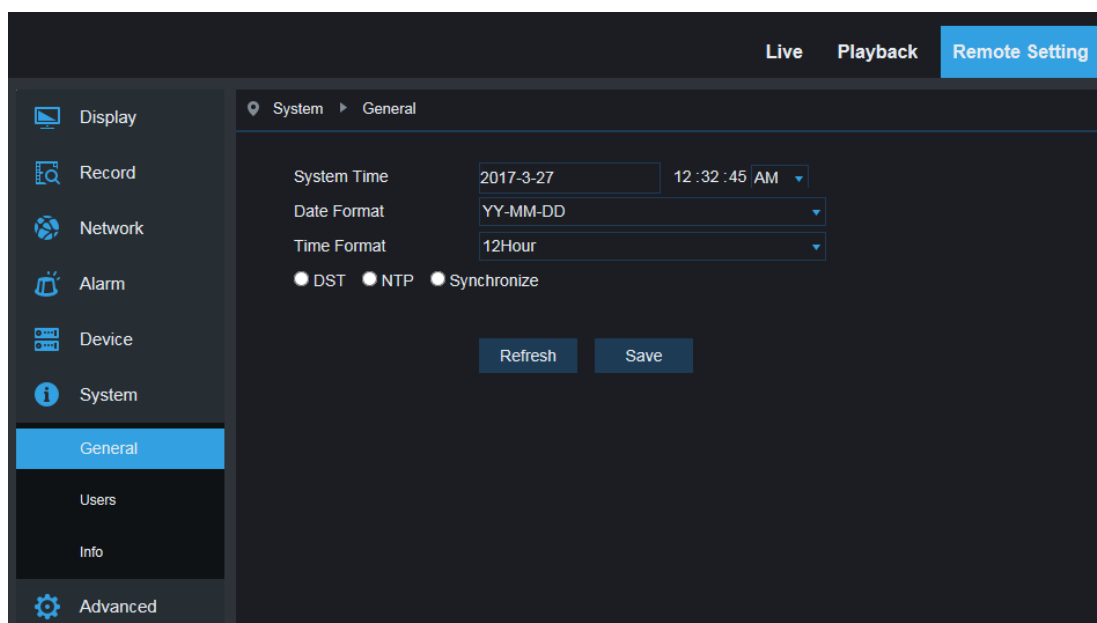
Click on "Refresh" to refresh the logs selected.

9. System Parameters

System parameters include Basic Information, User Configuration and System Information. Their interfaces and functions are described below.

9.1 Basic Information

Click on Basic Information in System Parameters menu to open the following page:



The device time, system time, date format and time format contained in the basic information can be manually set and saved.

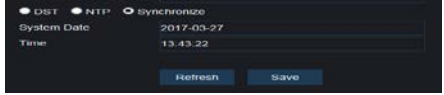
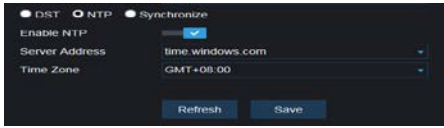
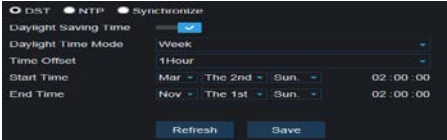
Three automatic time correction functions are provided in this device.

DST: Check Daylight Savings Time (DST) option to enable DST correction.

The device will correct the time based on the time deviation as set.

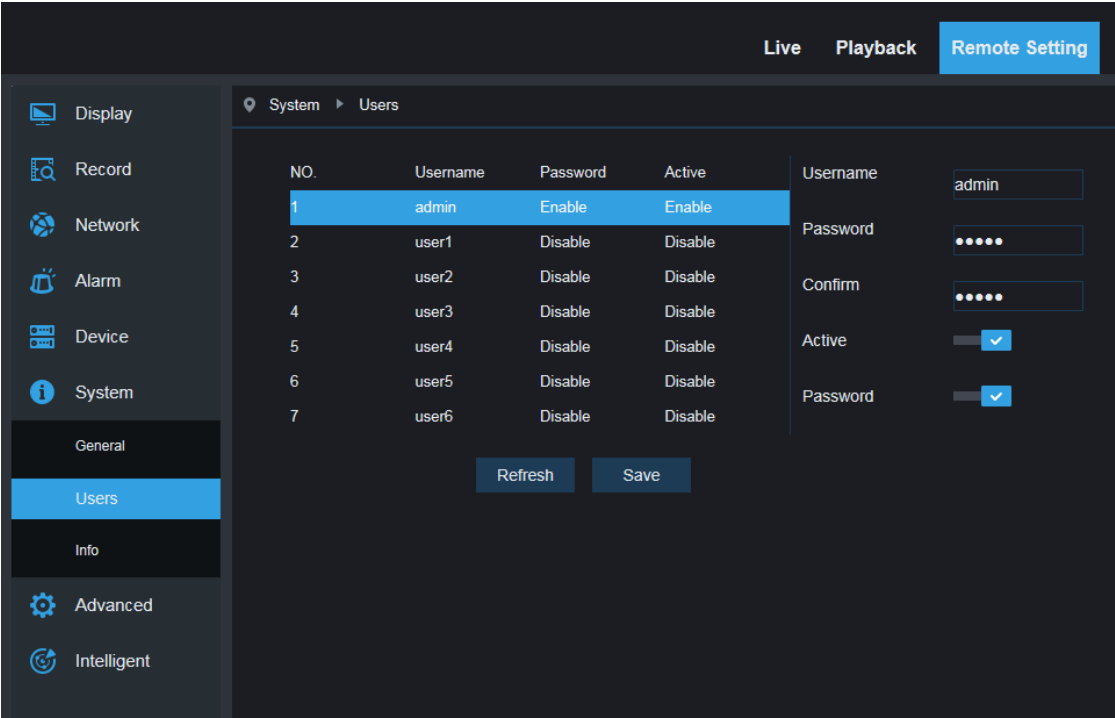
NTP: Check Enable NTP option, input the address of time server and choose a time zone and then save the setting. The system will correct time in accordance with the time server.

Sync with PC Time: The device will use PC as a time server to correct time.



9.2 User Configuration

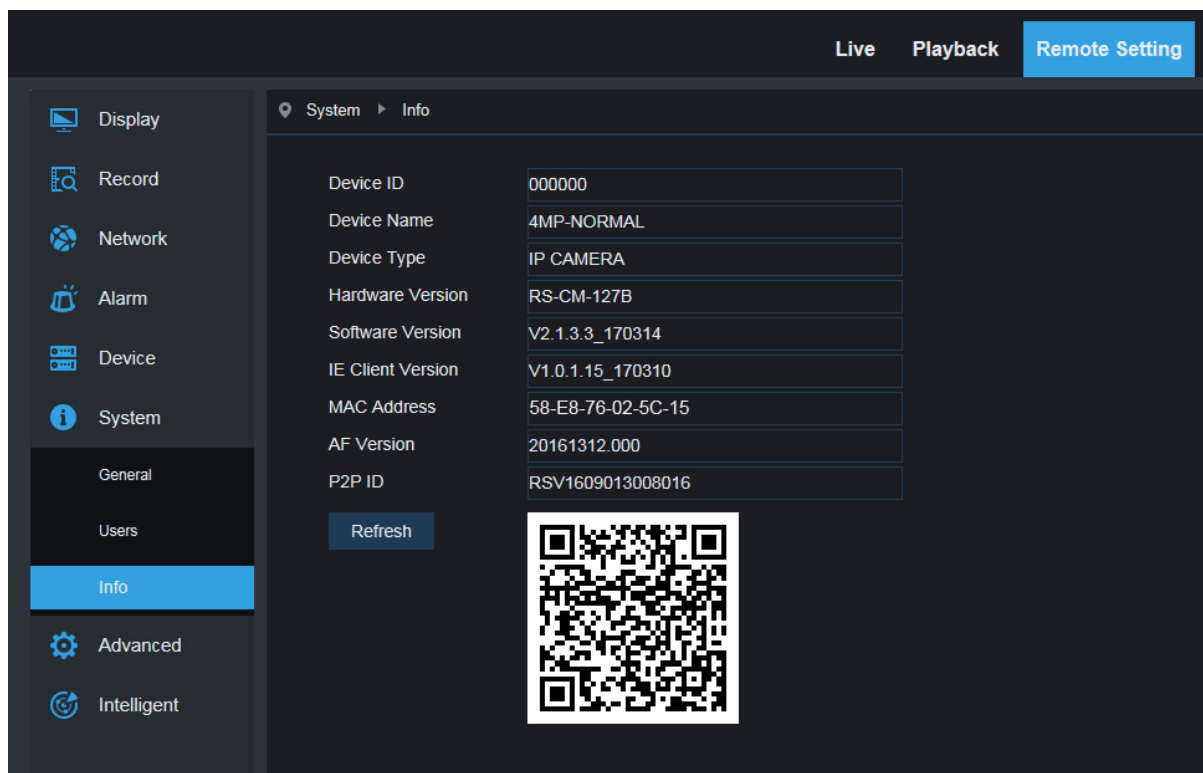
Click on User Configuration in System Parameters menu to open the following page:



Here you can set user access authority and login password.

9.3 System Information

Click on System Information in System Parameters menu to open the following page:



Parameter	Value
Device ID	000000
Device Name	4MP-NORMAL
Device Type	IP CAMERA
Hardware Version	RS-CM-127B
Software Version	V2.1.3.3_170314
IE Client Version	V1.0.1.15_170310
MAC Address	58-E8-76-02-5C-15
AF Version	20161312.000
P2P ID	RSV1609013008016

Here some system information on the device will be displayed, including device type, MAC address and software version.

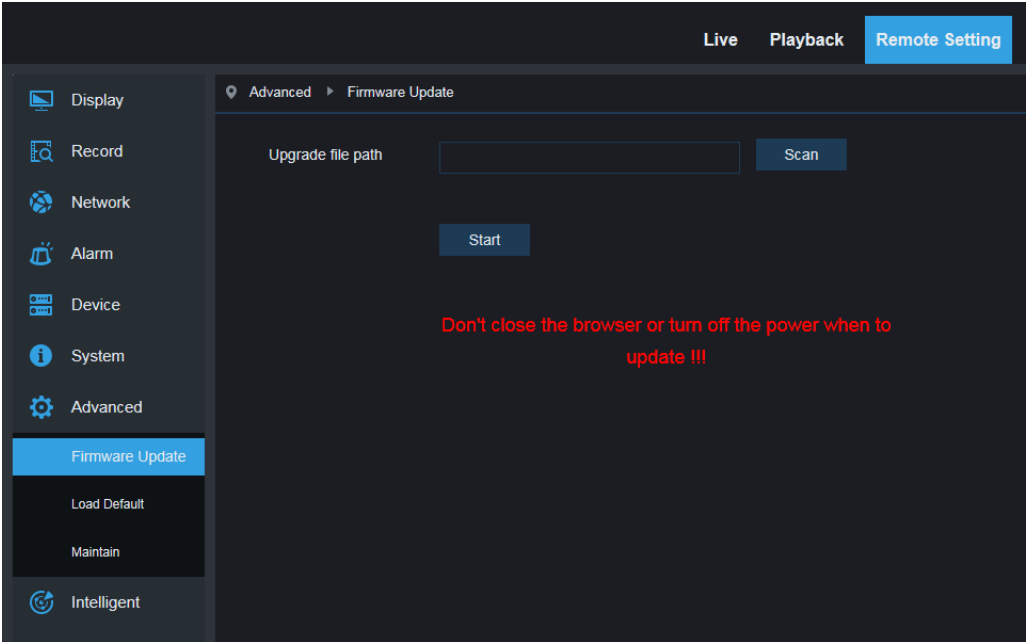
You can visit mobile app through P2P QR code directly.

10. Advanced

It includes System Update, Default Parameters and System Maintenance. Their interfaces and functions are described below.

10.1 System Update

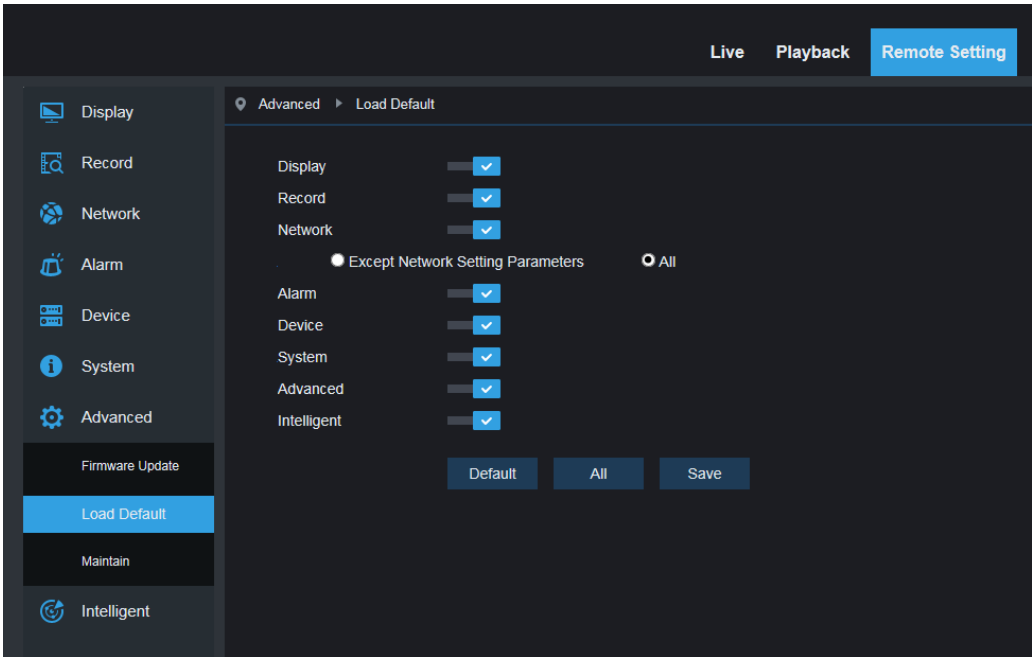
Click on System Update in Advanced menu to open the following page:



Update will be unavailable if the update files do not match the target device.

10.2 Default Parameters

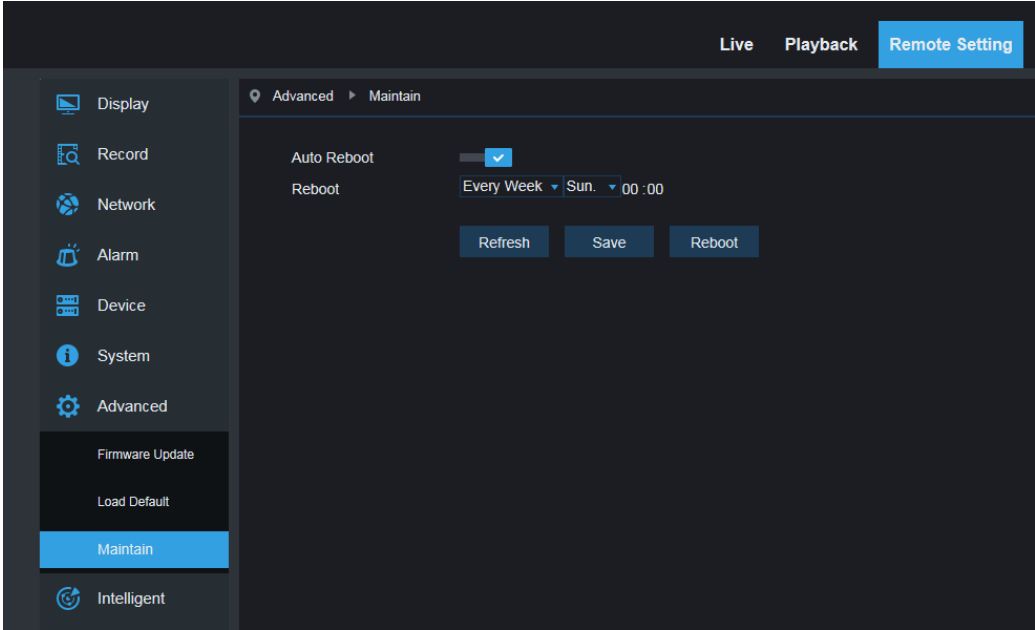
Click on Default Parameters in Advanced menu to open the following page:



Check relevant options and click on Save to recover the default factory settings for the options as checked.

10.3 System Maintenance

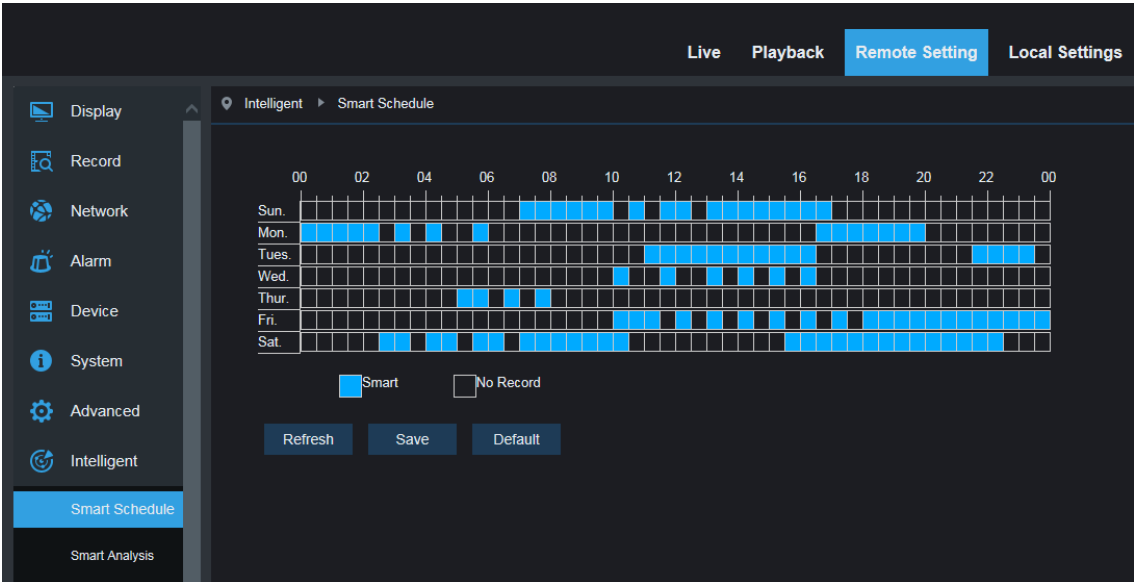
Click on System Maintenance in Advanced menu to open the following page: \



Here you can set regular restart or manual restart of the device.

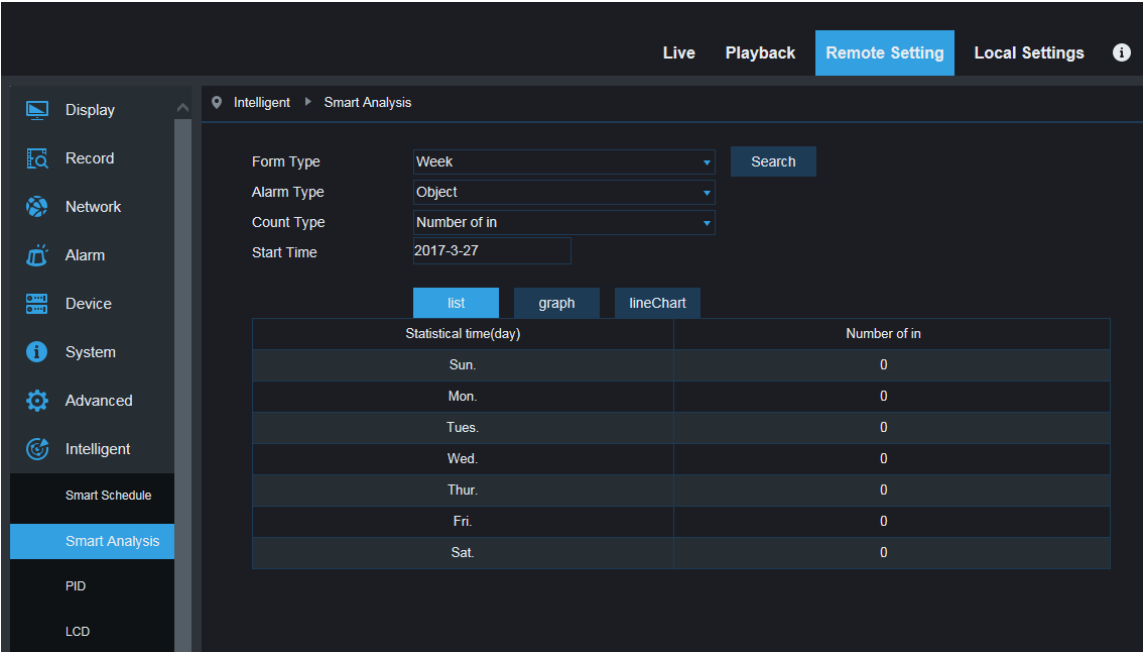
11. Intelligent

11.1 Smart Schedule



one grid in the table is 30 minute,User can setup according to private requirement to choose different record type and time.

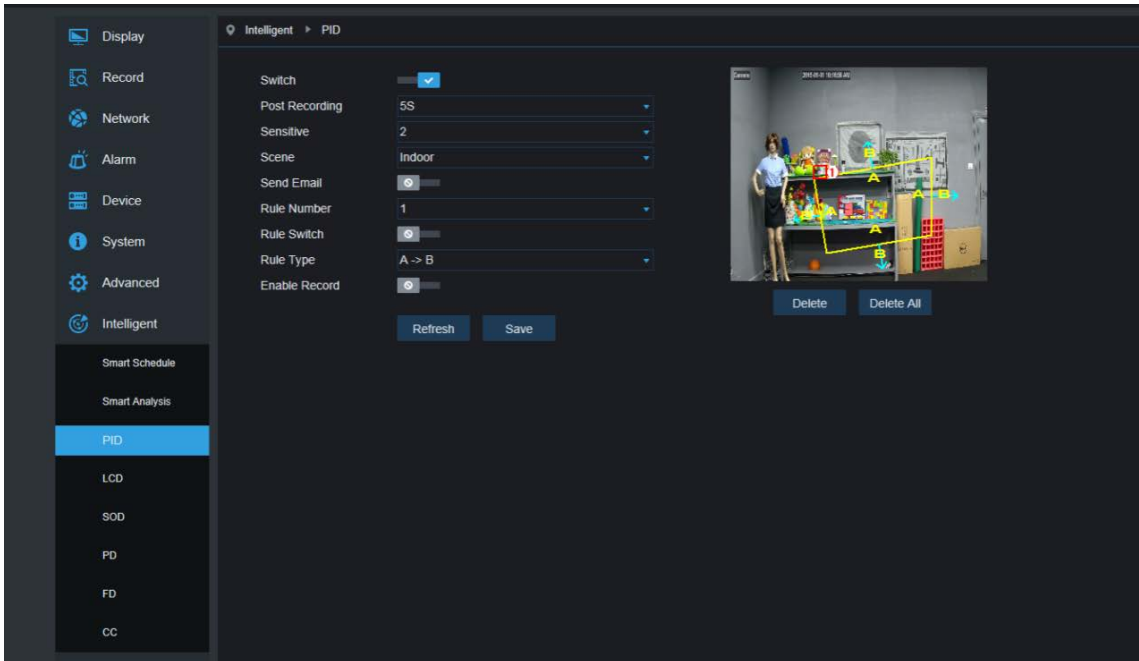
11.2 Smart Analysis



This page can correctly show the different time period's line crossing count (including different years , months and weeks' line crossing count). User can search the video according to the recording types, alarm types and the beginning time of the recording.

11.3 Perimeter Intrusion Detection (PID)

Click Perimeter Intrusion under the menu Intelligent:



Function description: in the preview page, to detect and follow up the invaded object
Switch: PID function master switch
Latch Time: when trigger alarm, the external alarm device output alarm time, can selected time period is 5S,10S, 20S, 30S.
Post Recording: after triggered alarm, the post record time, selected time period is 5S, 10S, 20S, 30S

Sensitive: Sensitive level, range is 1-4, default to 2. If the detected object sensitivity is more high, the moving

Object can be detected easily. Meanwhile, the false detection rate is higher. Suggest to use default level.

Scene: Scene setup, user can choose Indoor or outoddor according to real situationEnable I/O Out: Trigger alarm then if will be I/O output

Send Email: If trigger alarm, send the Email to notify, the Email setup need to set in Remote Setting –Network-Email

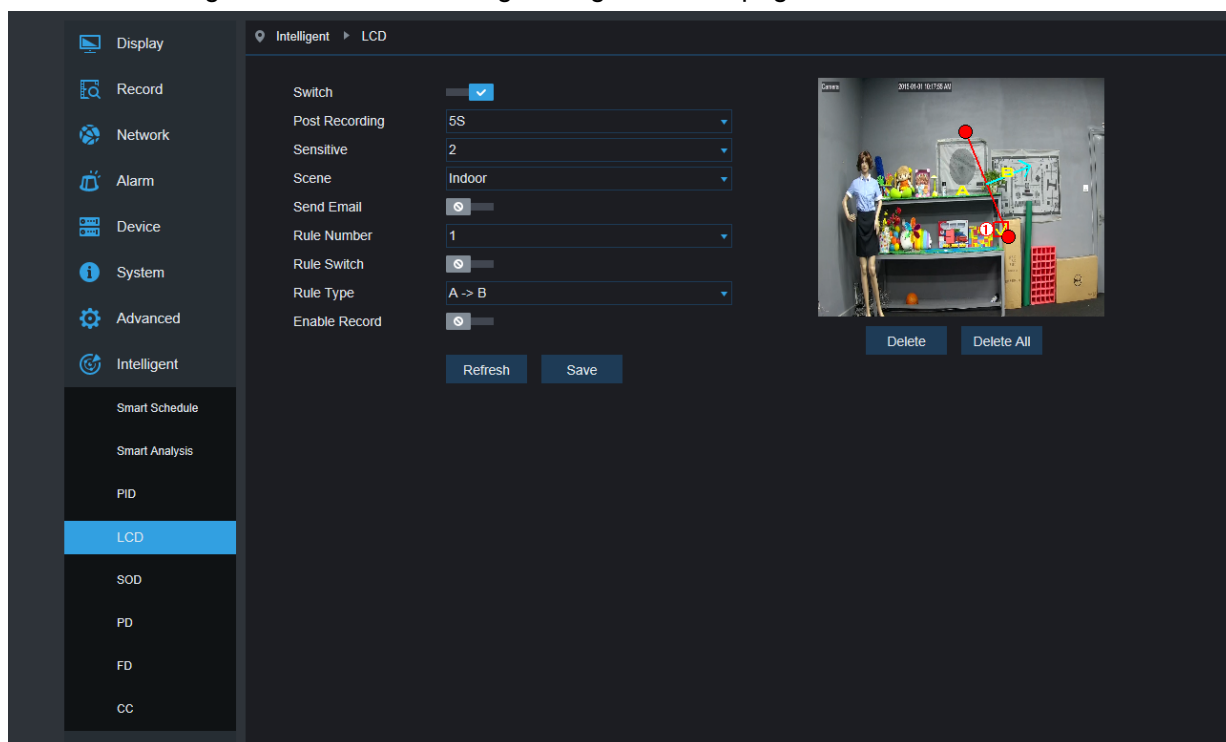
Record: if to do record

Rule Number: Max set 4 rule numberule Switch: The switch to every rule

Rule Type: Setup to each rule, A->B means can detect A to B direction moving, B->A means can detect B to A direction moving, A ↔B means can detect two directions moving.

11.4 Line Crossing Detection (LCD)

Click Line Crossing under the menu Intelligent to go to below page



Function description: in the preview page, detect and followup the moving object to pass through the guard line

Switch: LCD master switch

Latch Time: when trigger alarm, the external alarm device ouput alarm time, can selected time period is 5S,10S, 20S, 30S.

Post Recording:

after triggered alarm, the post record time, selected time period is 5S, 10S, 20S, 30S

Sensitive:

Sensitive level, range is 1-4, default to 2. If the detected object sensitivity is more high, the moving

Object can be detected easily. Meanwhile, the false detection rate is higher. Suggest to use default level

Scene: Scene setup, user can choose Indoor or outoddor according to real situationEnable I/O Out:

Trigger alarm then if will be I/O output

Send Email:

If trigger alarm, send the Email to notify, the Email setup need to set in Remote Setting –Network-Email

Record: if to do record

Rule Number: : Max set 4 rule numberRule Switch:

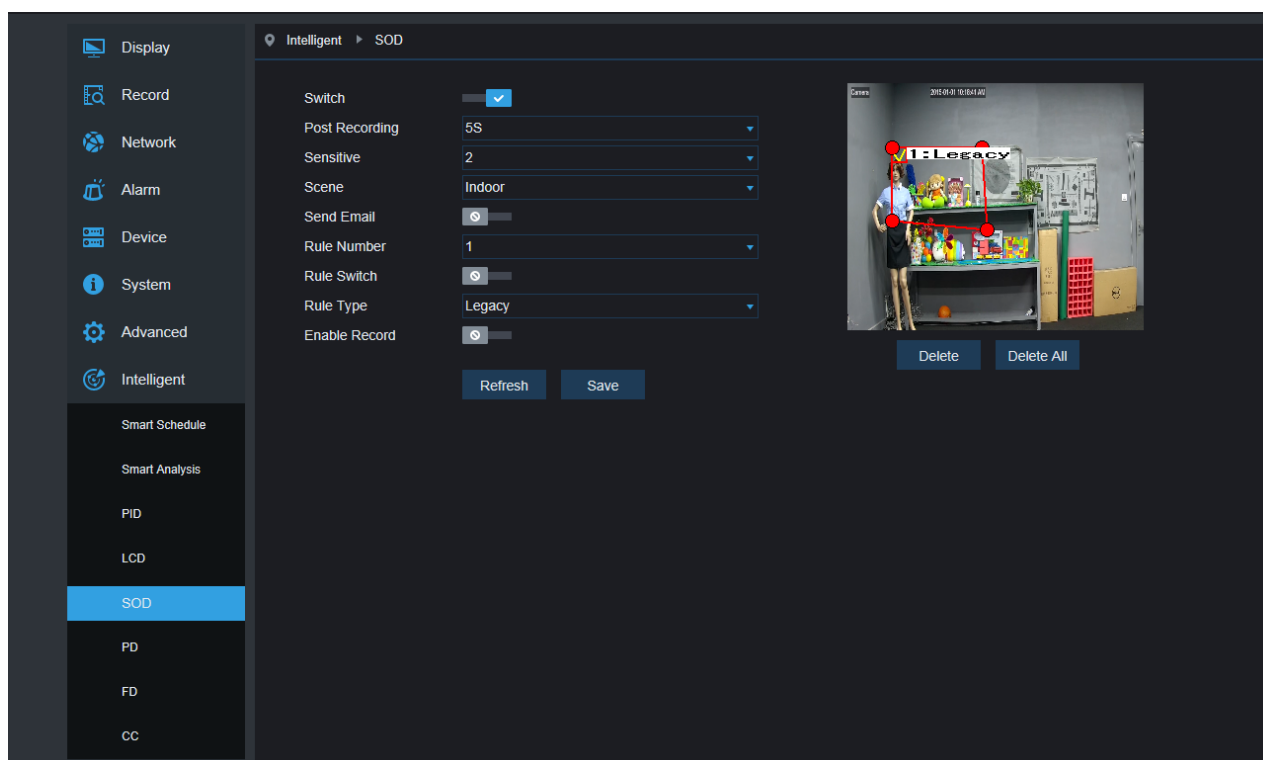
The switch to every rule

Rule Type:

Setup to each rule, A->B means can detect A to B direction moving, B->A means can detect B to A direction moving, A ↔ B means can detect two directions moving.

11.5 Stationary Object Detection

Click Stationary Object under the menu Intelligent to go to below page



Function description: in the preview page, detect the lost and leave behind object in one fixed area

Switch: LCD master switch

Latch Time: when trigger alarm, the external alarm device output alarm time, can selected time period is 5S,10S, 20S, 30S.

Post Recording:

after triggered alarm, the post record time, selected time period is 5S, 10S, 20S, 30S

Sensitive:

Sensitive level, range is 1-4, default to 2. If the detected object sensitivity is more high, the moving Object can be detected easily. Meanwhile, the false detection rate is higher. Suggest to use default level.

Scene: Scene setup, user can choose Indoor or outoddor according to real situationEnable I/O Out:

Trigger alarm then if will be I/O output

Send Email:

If trigger alarm, send the Email to notify, the Email setup need to set in Remote Setting –Network-Email

Record: if to do record

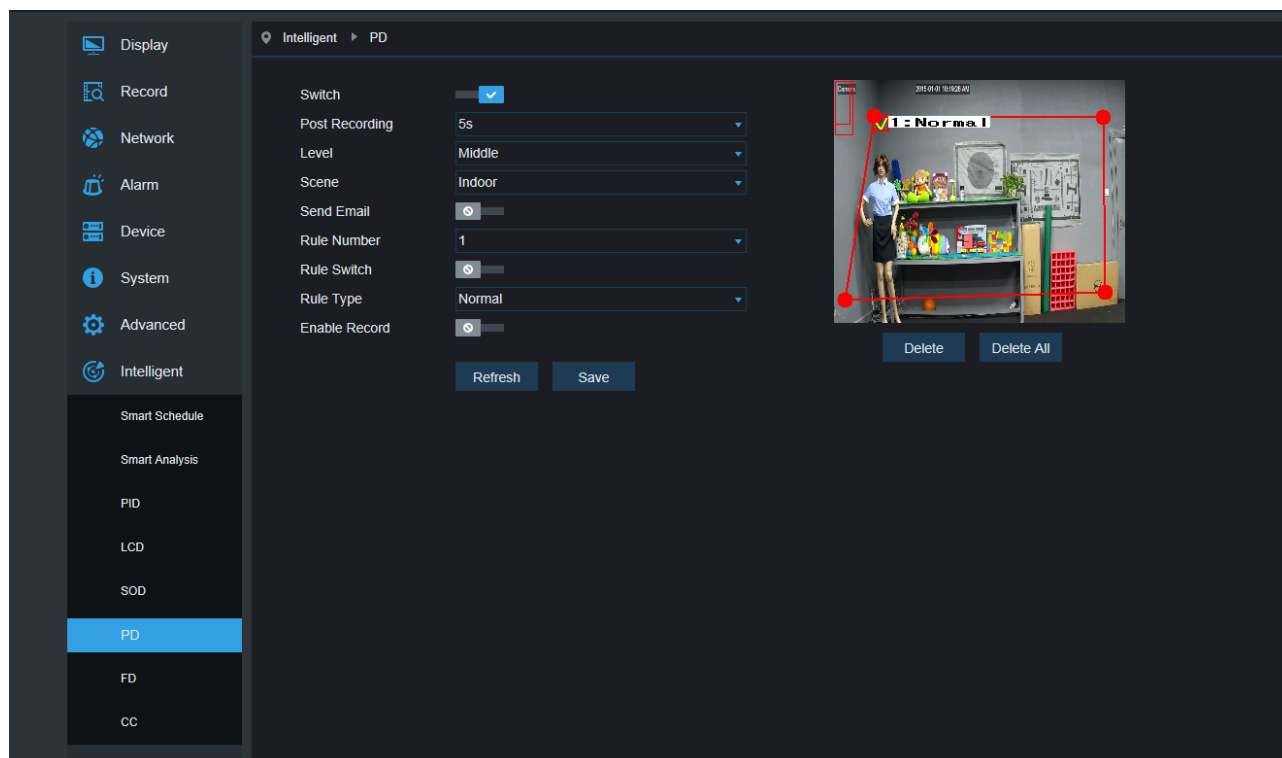
Rule Number: Max set 4 rule numberRule Switch:

The switch to every rule

Rule Type:

Setup to each rule, A->B means can detect A to B direction moving, B->A means can detect B to A direction moving, A ↔ B means can detect two directions moving.

11.6 Pedestrian Detection(PD)



Function description: in the preview page, detect the moving pedestrian.

【Switch】: Enable/ Disable

【Latch Time】: when trigger alarm, the external alarm device output alarm time, can selected time period is 5S,10S, 20S, 30S.

【Post Recording】: after triggered alarm, the post record time, selected time period is 5S, 10S, 20S, 30S

【Level】: detecting range is Small, Middle, Big, default to Middle. The detected target is far away , the range can be small, meanwhile the detected target is nearby , the range should be Big. Different detect ranges can display as one big and one small red rectangular box on the screen.(red rectangular box indicates the maximum and minimum range of the detected target at the current detecting, the detect range can be setup according to monitoring target.)

【Scene】: Scene setup, only support indoor.

Enable I/O Out: Trigger alarm then if will be I/O output

Send Email:

If trigger alarm, send the Email to notify, the Email setup need to set in Remote Setting –Network-Email

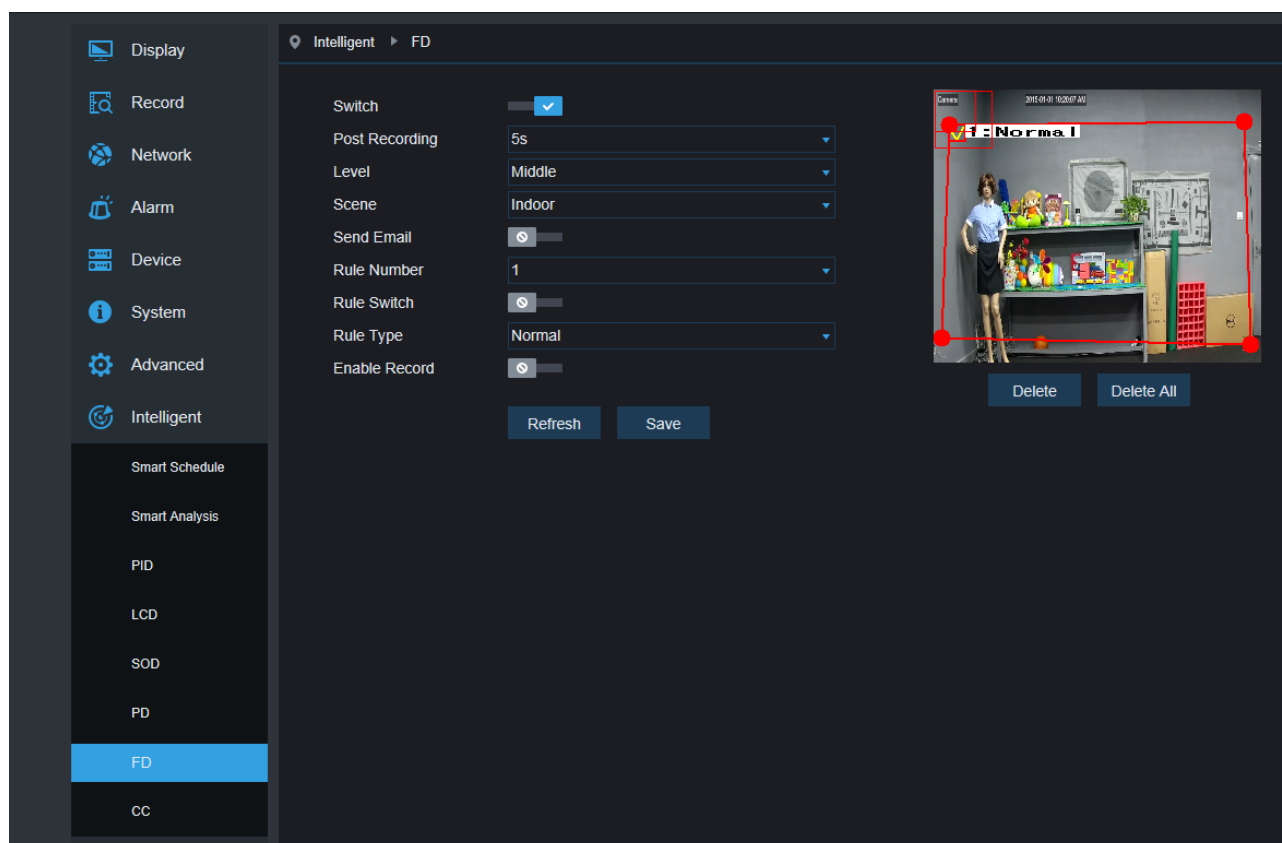
Record: if to do record.

Rule Number: Max set 1 rule number.

Rule Switch: The switch to every rule, Eanble/disable.

Rule Type: Setup to each rule, default to Normal.

11.7 Face Detection (FD)



Function description: in the preview page, detect the moving face.

【Switch】: Enable/ Disable

【Latch Time】: when trigger alarm, the external alarm device output alarm time, can selected time period is 5S,10S, 20S, 30S.

【Post Recording】: after triggered alarm, the post record time, selected time period is 5S, 10S, 20S, 30S

【Level】: detecting range is Small, Middle, Big, default to Middle. The detected target is far away , the range can be small, meanwhile the detected target is nearby , the range should be Big. Different detect ranges can display as one big and one small red rectangular box on the screen.(red rectangular box indicates the maximum and minimum range of the detected target at the current detecting, the detect range can be setup according to monitoring target.)

【Scene】: Scene setup, only support indoor.

Enable I/O Out: Trigger alarm then if will be I/O output

Send Email: If trigger alarm, send the Email to notify, the Email setup need to set in Remote Setting –Network-Email

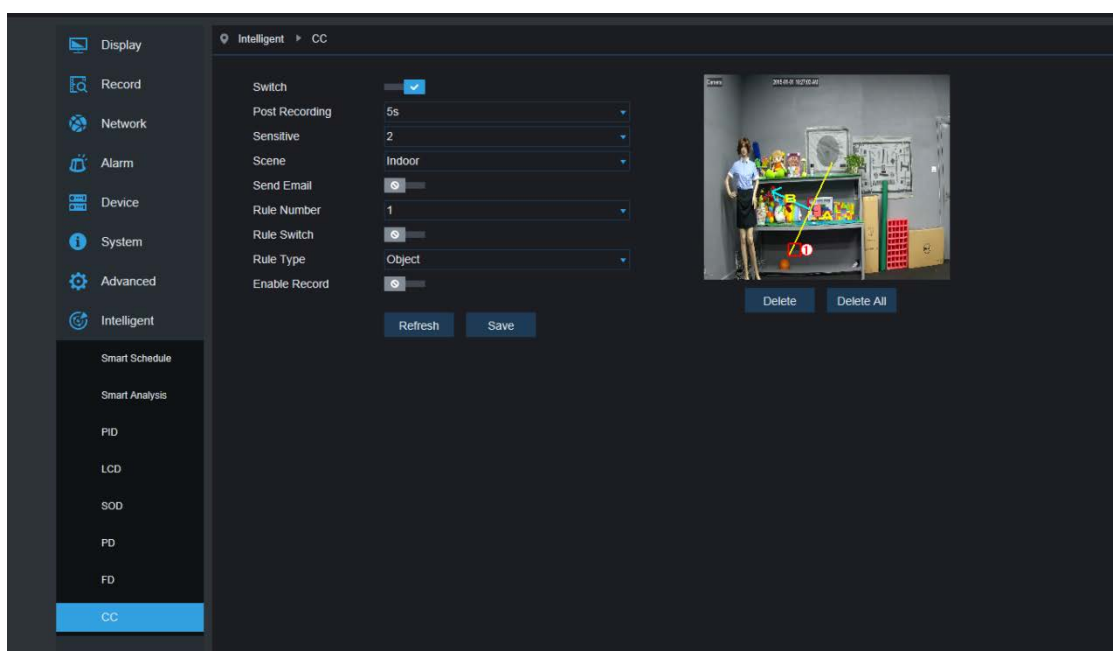
Record: if to do record.

Rule Number: Max set 1 rule number.

Rule Switch: The switch to every rule, Eanble/disable.

Rule Type: Setup to each rule, default to Normal.

11.8 Cross Counting(FD)



Function description: in the preview page, detect and line crossing count the moving object and pedestrian.

【Switch】: Enable/ Disable

【Latch Time】: when trigger alarm, the external alarm device output alarm time, can selected time period is 5S,10S, 20S, 30S.

【Post Recording】: after triggered alarm, the post record time, selected time period is 5S, 10S, 20S, 30S

【Level】: range is 1-4, default to 2. If the detected object sensitivity is more high, the moving Object can be detected easily. Meanwhile, the false detection rate is higher. Suggest to use default level.

【Scene】: Scene setup, only support indoor.

Enable I/O Out: Trigger alarm then if will be I/O output

Send Email: If trigger alarm, send the Email to notify, the Email setup need to set in Remote Setting –Network-Email

Record: if to do record.

Rule Number: Max set 1 rule number.

Rule Switch: The switch to every rule, Eanble/disable.

Rule Type: Setup to each rule, Object-line crossing count of the object. Pedestrain- line crossing count of the pedestrain.

Tips:

- 1) IA function enable, need 30S-1 mins to initialize, during this period, function don't work
- 2) When enable PID, LCD and SOD function at same time, the setup is follow up the the last one scene
- 3) the Intelligent alarm of FD,PD and CC are exclusive with the PID,LCD,SOD, cannot be used at the same time.

CAUTION

RISK OF EXPLOSION IF BATTERY IS REPLACED BY AN INCORRECT TYPE

DISPOSE OF USED BATTERIES ACCORDING TO THE INSTRUCTIONS

Warranty Card

Dear User:

Thanks for purchasing our product, in order to offer you better after sales service. Please fulfill the Warranty Card and Product Registration Card carefully, then send the completed card to franchiser or our Exclusive Sales Agent.

Product Description: _____

Product Model No.: _____

Date of Purchase: _____

Invoice(P/O) No.: _____

User Name: _____

Telephone: _____ FAX: _____

Address: _____ E-Mail: _____

Franchiser or exclusive sales agent: _____

Telephone: _____

Warranty Record	Repair Date	Repair Item	Person

Remark: 1)Presentation of Warranty items, please refer to back.

2)The card will be valid after 15 days of purchase when the franchiser or Exclusive sales agent chop.

----- Cut along the dashed -----

Product Registration Card

Product Description: _____

Product model No.: _____

Date of Purchase: _____

Invoice(P/O) No.: _____

User Name: _____

Telephone: _____ FAX: _____

Address: _____ E-Mail: _____

Franchiser or exclusive sales⁴agent: _____

Telephone: _____

Product Warranty Presentation

Warranty Period:

Since the date of purchase. Exchange service after 3 months of purchase, repair service after 1 year of purchase.

Warranty items:

- 1 Before you use the product ,please read <User s Manual> carefully.
- 2 You can share the Warranty service after you buy our product and send the completed card to our franchiser or exclusive agent.
- 3 Based on the Warranty items ,you can share free charge repair service only when you show the card under right operation of the product.
- 4 Please reserve /keep the Warranty card carefully if you need us repair the product.
- 5 you are charged for repairing under below condition
 - 1)Beyond the Warranty period
 - 2)no detailed fulfill information with scratches.
 - 3)wrong operation under high temperature/pressure,deep;strong electrimagnetic interference.
 - 4)Do not follow the instruction manual or wrong operation
- 6 we will ignore product, under below condition.
 - 1)Dismental repair by themselves.
 - 2)Problem caused by software or virus.
- 7The card is only valid in China domain.

----- Cut along the dashed -----

Your suggestion on our product is highly appreciated. We will keep tracing and developing to product high quality product for you.

Thanks for your co-operation

Yours Suggestion	
------------------	--

